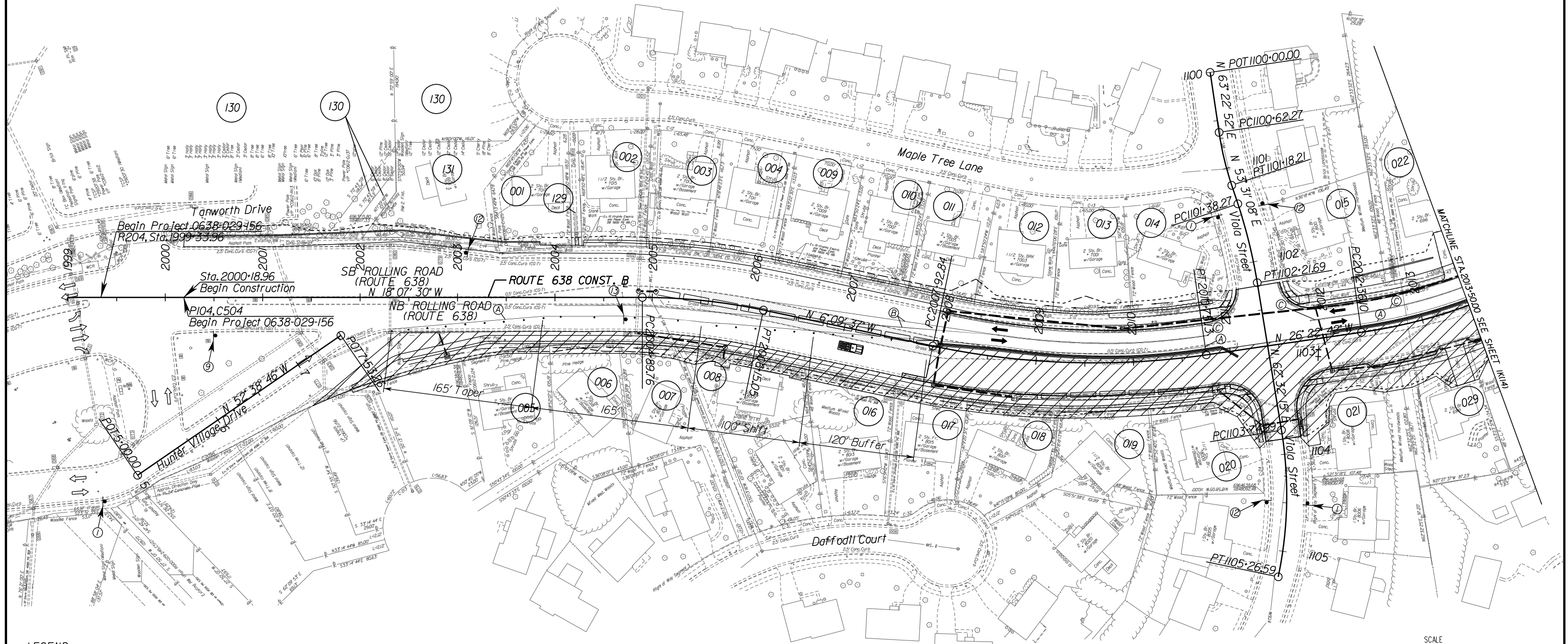


PROJECT MANAGER: Chris Barksdale, PE (703) 259-2768, JNOVA  
SURVEYED BY, DATE: Brian Eltcher, L.S. (703) 259-2355, JNOVA, August 2015  
DESIGN BY: Tyler Long, PE, Whitman, Reardon & Associates, (703) 293-9072  
SUBSURFACE UTILITY BY, DATE: So-Deep, Inc., (703) 361-6005, August 2015

# TRANSPORTATION MANAGEMENT PLAN PHASE 3

REVISED	STATE	ROUTE	STATE PROJECT	SHEET NO.
	VA.	638	0638-029-156 P-104, R-204, C-504	1K(13)
DESIGN FEATURES RELATING TO CONSTRUCTION OR TO REGULATION AND CONTROL OF TRAFFIC MAY BE SUBJECT TO CHANGE AS DEEMED NECESSARY BY THE DEPARTMENT				
Whitman, Reardon & Associates Fairfax, Virginia ROADWAY ENGINEER				



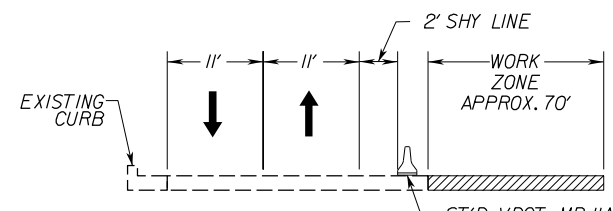
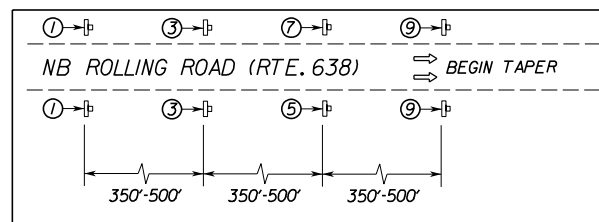
**LEGEND**

- WORK ZONE AREA
- TEMP. PAVEMENT FROM PHASE I
- GROUP 2 CHANNELIZING DEVICE
- TYPE 3 BARRICADE
- TRAFFIC BARRIER SERVICE
- TL-2 TEMP. ATTENUATOR
- SIGN
- EXISTING DIRECTION OF TRAVEL
- TEMPORARY DIRECTION OF TRAVEL
- WORK VEHICLE

**NOTES**

- 1) SEE SHEET 1(K1) FOR SIGN LEGEND.
- 2) PROJECT LIMITS SIGNING SHALL BE IN ACCORDANCE WITH FIGURE TTC-53.0 OF THE 2011 WAPM.
- 3) INTERIOR LANE CLOSURE ON ROLLING ROAD SHALL BE IN ACCORDANCE WITH FIGURE TTC-17.J OF THE 2011 WAPM.
- 4) MAINTAIN ACCESS TO ENTRANCES THROUGHOUT DURATION OF CONSTRUCTION.
- 5) ALL CHANNELIZING DEVICE SPACING SHALL BE IN ACCORDANCE WITH TABLE 6H-4 OF THE 2011 WAPM.
- 6) EXISTING PAVEMENT MARKINGS THAT CONFLICT WITH PROPOSED TEMPORARY LANE MARKINGS SHALL BE COMPLETELY ERADICATED.

**WORKZONE APPROACH DETAIL 3  
(FIGURE TTC-41J)  
N.T.S.**



ROLLING ROAD (RTE. 638)  
SPEED LIMIT = 30 MPH  
HALF ROAD CLOSURE OPERATION ON A MULTI-LANE ROADWAY (TTC-41J)  
STA. 2007+92.84 TO STA. 2013+50.00



**R.O.W. PLANS**

THESE PLANS ARE UNFINISHED AND UNAPPROVED AND ARE NOT TO BE USED FOR ANY TYPE OF CONSTRUCTION.

PROJECT	SHEET NO.
0638-029-156	1K(13)

PROJECT MANAGER: Chris Barksdale, PE (703) 259-2768, INOVA  
SURVEYED BY: DATE Brian Eltcher, LS (703) 259-2355, INOVA, August 2015  
DESIGN BY: Tyler Long, PE, Whitman, Requardt & Associates, (703) 293-9072  
SUBSURFACE UTILITY BY: DATE So Deep, Inc., (703) 3616005, August 2015

# TRANSPORTATION MANAGEMENT PLAN

## PHASE 3

REVISED	STATE	ROUTE	STATE PROJECT	SHEET NO.
	VA.	638	0638-029-156 P-104, R-204, C-504	1K(14)

DESIGN FEATURES RELATING TO CONSTRUCTION OR TO REGULATION AND CONTROL OF TRAFFIC MAY BE SUBJECT TO CHANGE AS DEEMED NECESSARY BY THE DEPARTMENT

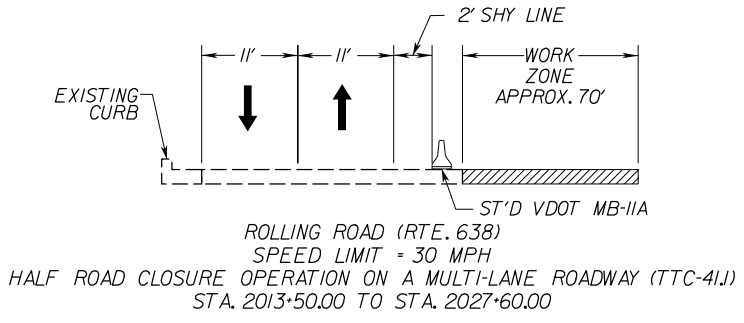
Whitman, Requardt & Associates  
Fairfax, Virginia  
ROADWAY ENGINEER



**LEGEND**

	WORK ZONE AREA
	GROUP 2 CHANNELIZING DEVICE
	TYPE 3 BARRICADE
	TRAFFIC BARRIER SERVICE
	TL-2 TEMP. ATTENUATOR
	SIGN
	EXISTING DIRECTION OF TRAVEL
	TEMPORARY DIRECTION OF TRAVEL
	WORK VEHICLE

- NOTES**
- 1) SEE SHEET 1K(1) FOR SIGN LEGEND.
  - 2) PROJECT LIMITS SIGNING SHALL BE IN ACCORDANCE WITH FIGURE TTC-53.0 OF THE 2011 WAPM.
  - 3) INTERIOR LANE CLOSURE ON ROLLING ROAD SHALL BE IN ACCORDANCE WITH FIGURE TTC-17.1 OF THE 2011 WAPM.
  - 4) MAINTAIN ACCESS TO ENTRANCES THROUGHOUT DURATION OF CONSTRUCTION.
  - 5) ALL CHANNELIZING DEVICE SPACING SHALL BE IN ACCORDANCE WITH TABLE 6H-4 OF THE 2011 WAPM.
  - 6) EXISTING PAVEMENT MARKINGS THAT CONFLICT WITH PROPOSED TEMPORARY LANE MARKINGS SHALL BE COMPLETELY ERADICATED.



SCALE  
0 50' 100'

**R.O.W. PLANS**

THESE PLANS ARE UNFINISHED AND UNAPPROVED AND ARE NOT TO BE USED FOR ANY TYPE OF CONSTRUCTION.

PROJECT	SHEET NO.
0638-029-156	1K(14)

PROJECT MANAGER: Chris Barksdale, PE (703) 259-2768, INOVA  
SURVEYED BY: DATE Brian Eltcher, L.S. (703) 259-2355, INOVA, August 2015  
DESIGN BY: Tyler Long, P.E., WhitmanRequardt & Associates, (703) 293-9072  
SUBSURFACE UTILITY BY: DATE So Deep, Inc., (703) 361-6005, August 2015

# TRANSPORTATION MANAGEMENT PLAN PHASE 3

REVISED	STATE	ROUTE	STATE PROJECT	SHEET NO.
	VA.	638	0638-029-156 P-104, R-204, C-504	1K(15)

DESIGN FEATURES RELATING TO CONSTRUCTION OR TO REGULATION AND CONTROL OF TRAFFIC MAY BE SUBJECT TO CHANGE AS DEEMED NECESSARY BY THE DEPARTMENT

Whitman, Requardt & Associates  
Fairfax, Virginia  
ROADWAY ENGINEER

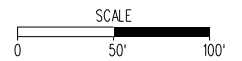
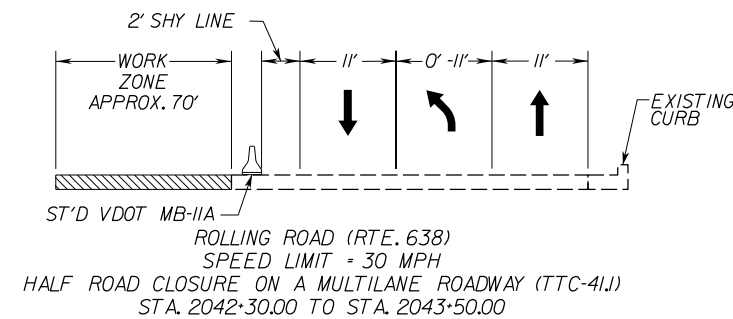
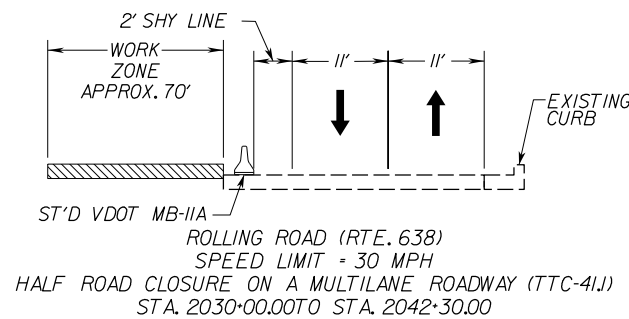


### LEGEND

- WORK ZONE AREA
- GROUP 2 CHANNELIZING DEVICE
- TYPE 3 BARRICADE
- TRAFFIC BARRIER SERVICE
- TL-2 TEMP. ATTENUATOR
- SIGN
- EXISTING DIRECTION OF TRAVEL
- TEMPORARY DIRECTION OF TRAVEL
- WORK VEHICLE

### NOTES

- 1) SEE SHEET 1K(1) FOR SIGN LEGEND.
- 2) PROJECT LIMITS SIGNING SHALL BE IN ACCORDANCE WITH FIGURE TTC-53.0 OF THE 2011 WAPM.
- 3) INTERIOR LANE CLOSURE ON ROLLING ROAD SHALL BE IN ACCORDANCE WITH FIGURE TTC-17.1 OF THE 2011 WAPM. OUTSIDE LANE CLOSURE ON ROLLING ROAD SHALL BE IN ACCORDANCE WITH TTC-16.1.
- 4) MAINTAIN ACCESS TO ENTRANCES THROUGHOUT DURATION OF CONSTRUCTION.
- 5) ALL CHANNELIZING DEVICE SPACING SHALL BE IN ACCORDANCE WITH TABLE 6H-4 OF THE 2011 WAPM.
- 6) EXISTING PAVEMENT MARKINGS THAT CONFLICT WITH PROPOSED TEMPORARY LANE MARKINGS SHALL BE COMPLETELY ERADICATED.



### R.O.W. PLANS

THESE PLANS ARE UNFINISHED AND UNAPPROVED AND ARE NOT TO BE USED FOR ANY TYPE OF CONSTRUCTION.

PROJECT	SHEET NO.
0638-029-156	1K(15)



PROJECT MANAGER: Chris Barksdale, PE (703) 259-2768, INQUIRY  
SURVEYED BY: DATE: Brian Eitelcher, L.S. (703) 259-2355, INQUIRY, August 2015  
DESIGN BY: Tyler Long, PE, - Whitman, Requardt & Associates, (703) 293-9072  
SUBSURFACE UTILITY BY: DATE: So-Deep, Inc., (703) 361-6005, August 2015

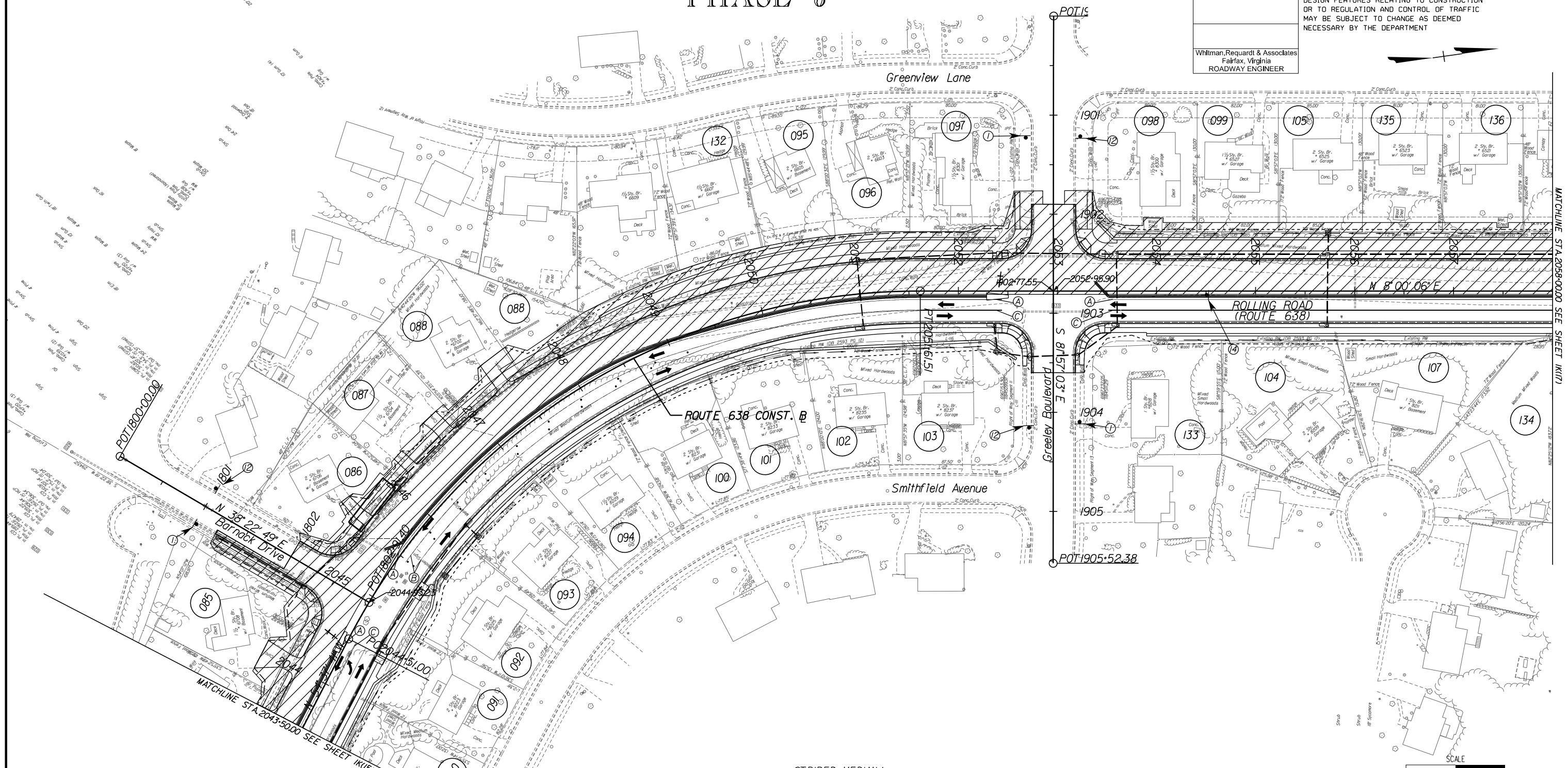
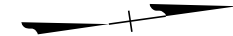
# TRANSPORTATION MANAGEMENT PLAN

## PHASE 3

REVISED	STATE	ROUTE	STATE PROJECT	SHEET NO.
	VA.	638	0638-029-156 P-104, R-204, C-504	1K(16)

DESIGN FEATURES RELATING TO CONSTRUCTION OR TO REGULATION AND CONTROL OF TRAFFIC MAY BE SUBJECT TO CHANGE AS DEEMED NECESSARY BY THE DEPARTMENT

Whitman, Requardt & Associates  
Fairfax, Virginia  
ROADWAY ENGINEER

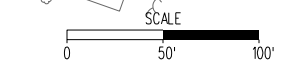
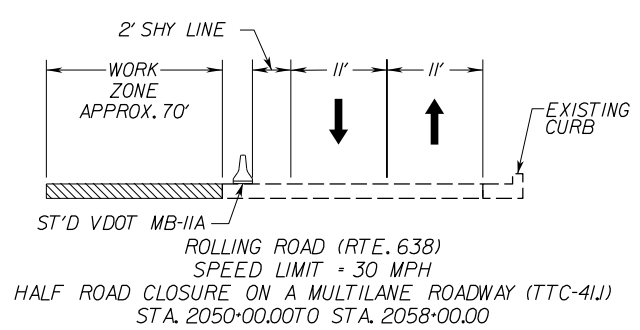
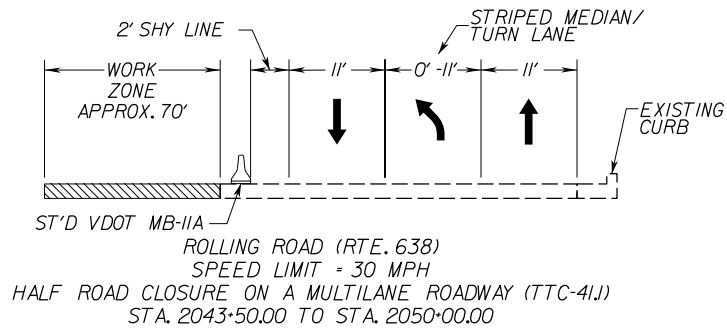


### LEGEND

- WORK ZONE AREA
- GROUP 2 CHANNELIZING DEVICE
- TYPE 3 BARRICADE
- TRAFFIC BARRIER SERVICE
- TL-2 TEMP. ATTENUATOR
- SIGN
- EXISTING DIRECTION OF TRAVEL
- TEMPORARY DIRECTION OF TRAVEL
- WORK VEHICLE

### NOTES

- 1) SEE SHEET 1K(1) FOR SIGN LEGEND.
- 2) PROJECT LIMITS SIGNING SHALL BE IN ACCORDANCE WITH FIGURE TTC-53.D OF THE 2011 WAPM.
- 3) HALF ROAD CLOSURE ON ROLLING ROAD SHALL BE IN ACCORDANCE WITH FIGURE TTC-41.J OF THE 2011 WAPM.
- 4) MAINTAIN ACCESS TO ENTRANCES THROUGHOUT DURATION OF CONSTRUCTION.
- 5) ALL CHANNELIZING DEVICE SPACING SHALL BE IN ACCORDANCE WITH TABLE 6H-4 OF THE 2011 WAPM.
- 6) EXISTING PAVEMENT MARKINGS THAT CONFLICT WITH PROPOSED TEMPORARY LANE MARKINGS SHALL BE COMPLETELY ERADICATED.



### R.O.W. PLANS

THESE PLANS ARE UNFINISHED AND UNAPPROVED AND ARE NOT TO BE USED FOR ANY TYPE OF CONSTRUCTION.

PROJECT	SHEET NO.
0638-029-156	1K(16)

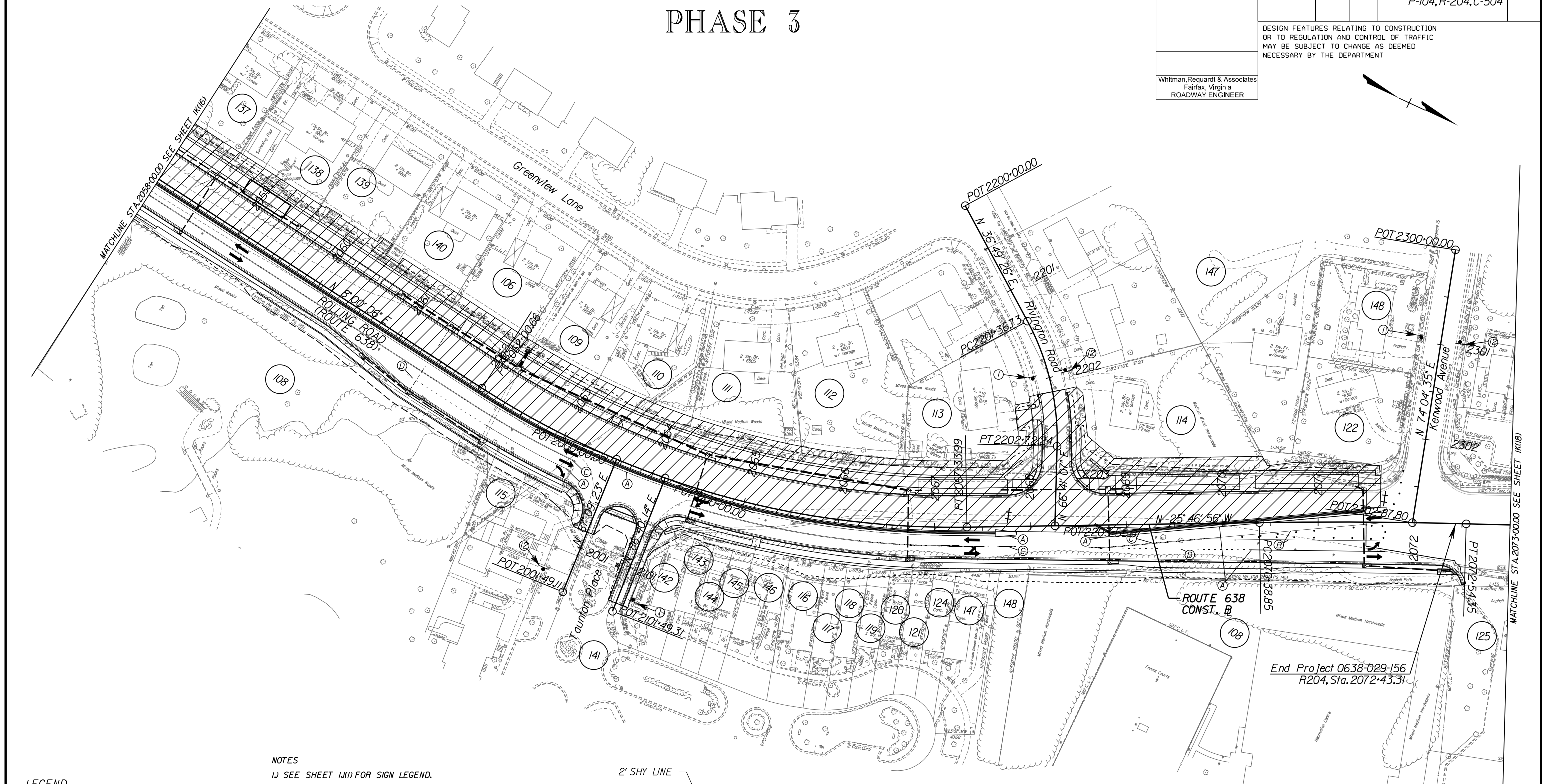
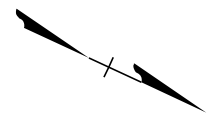
PROJECT MANAGER: Chris Barksdale, PE (703) 259-2768 JNOVA  
SURVEYED BY, DATE: Brian Eltcher, LS (703) 259-2355 JNOVA, August 2015  
DESIGN BY: Tyler Long, PE - Whitman, Requardt & Associates (703) 293-9072  
SUBSURFACE UTILITY BY, DATE: So-Deep, Inc. (703) 361-6005, August 2015

# TRANSPORTATION MANAGEMENT PLAN PHASE 3

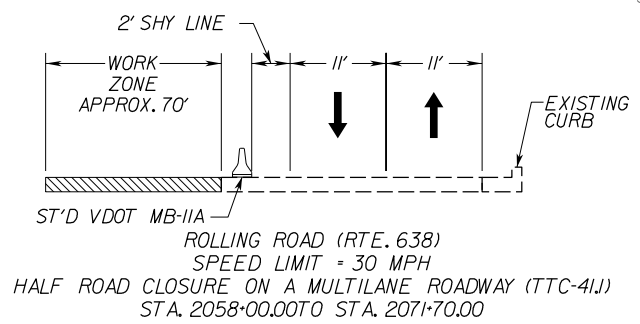
REVISED	STATE	ROUTE	STATE PROJECT	SHEET NO.
	VA.	638	0638-029-156 P-104, R-204, C-504	1K(17)

DESIGN FEATURES RELATING TO CONSTRUCTION OR TO REGULATION AND CONTROL OF TRAFFIC MAY BE SUBJECT TO CHANGE AS DEEMED NECESSARY BY THE DEPARTMENT

Whitman, Requardt & Associates  
Fairfax, Virginia  
ROADWAY ENGINEER



- NOTES**
- 1) SEE SHEET 1K(1) FOR SIGN LEGEND.
  - 2) PROJECT LIMITS SIGNING SHALL BE IN ACCORDANCE WITH FIGURE TTC-53.0 OF THE 2011 WAPM.
  - 3) HALF ROAD CLOSURE ON ROLLING ROAD SHALL BE IN ACCORDANCE WITH FIGURE TTC-41J OF THE 2011 WAPM.
  - 4) MAINTAIN ACCESS TO ENTRANCES THROUGHOUT DURATION OF CONSTRUCTION.
  - 5) ALL CHANNELIZING DEVICE SPACING SHALL BE IN ACCORDANCE WITH TABLE 6H-4 OF THE 2011 WAPM.
  - 6) EXISTING PAVEMENT MARKINGS THAT CONFLICT WITH PROPOSED TEMPORARY LANE MARKINGS SHALL BE COMPLETELY ERADICATED.

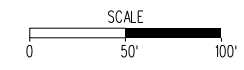


**LEGEND**

- WORK ZONE AREA
- GROUP 2 CHANNELIZING DEVICE
- TYPE 3 BARRICADE
- TRAFFIC BARRIER SERVICE
- TL-2 TEMP. ATTENUATOR
- SIGN
- EXISTING DIRECTION OF TRAVEL
- TEMPORARY DIRECTION OF TRAVEL
- WORK VEHICLE

**R.O.W. PLANS**

THESE PLANS ARE UNFINISHED AND UNAPPROVED AND ARE NOT TO BE USED FOR ANY TYPE OF CONSTRUCTION.



End Project 0638-029-156  
R204, Sta. 2072+43.31

PROJECT	SHEET NO.
0638-029-156	1K(17)

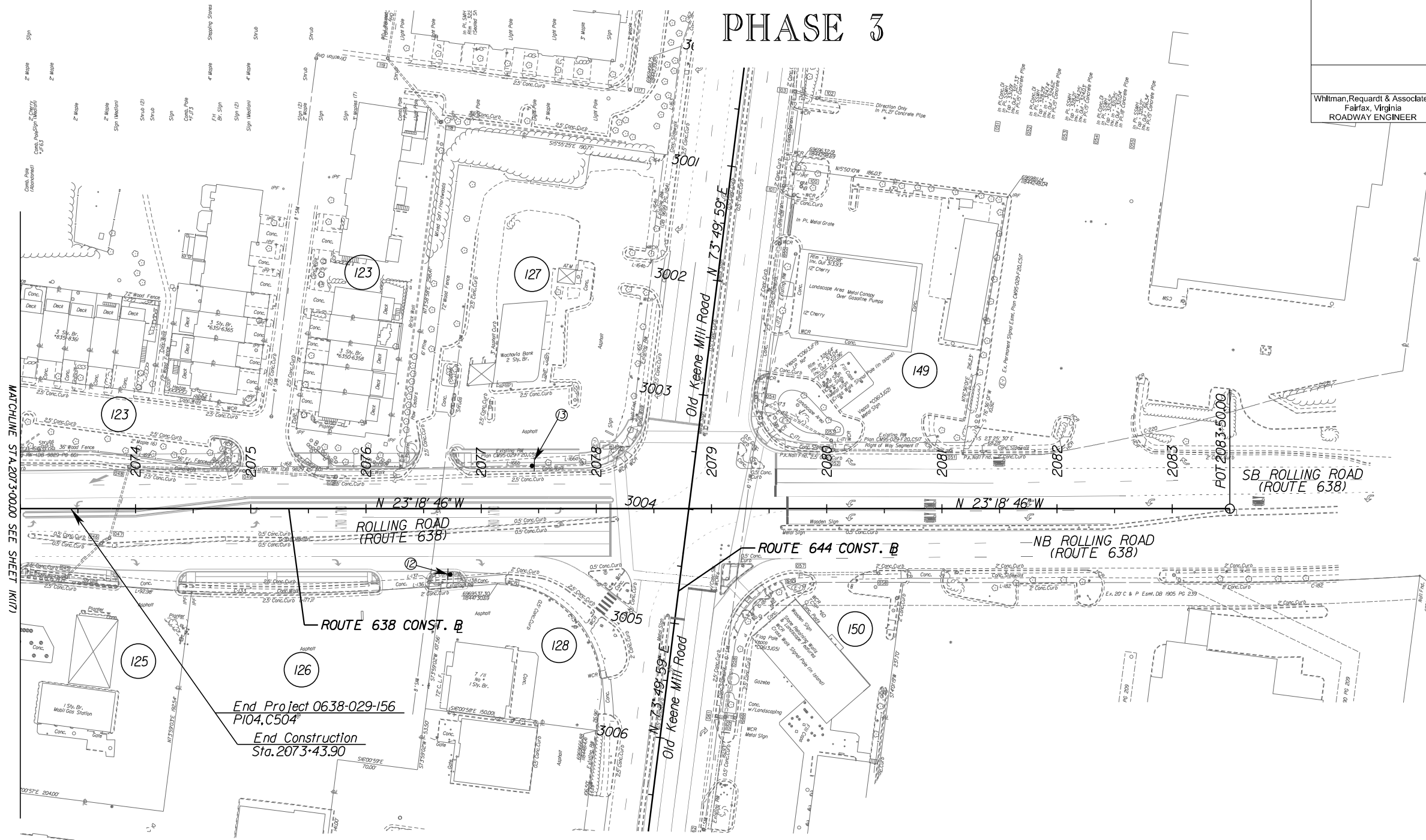
PROJECT MANAGER: Chris Barksdale, PE (703) 259-2768 JNOVA  
SURVEYED BY: DATE Brian Eitelcher, L.S. (703) 259-2355 JNOVA, August 2015  
DESIGN BY: Tyler Long, PE - Whitman, Requardt & Associates, (703) 293-9172  
SUBSURFACE UTILITY BY: DATE So Deep, Inc., (703) 361-6005, August 2015

# TRANSPORTATION MANAGEMENT PLAN PHASE 3

REVISED	STATE	ROUTE	STATE PROJECT	SHEET NO.
	VA.	638	0638-029-156 P-104, R-204, C-504	1K(18)

DESIGN FEATURES RELATING TO CONSTRUCTION OR TO REGULATION AND CONTROL OF TRAFFIC MAY BE SUBJECT TO CHANGE AS DEEMED NECESSARY BY THE DEPARTMENT

Whitman, Requardt & Associates  
Fairfax, Virginia  
ROADWAY ENGINEER



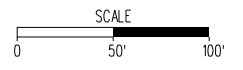
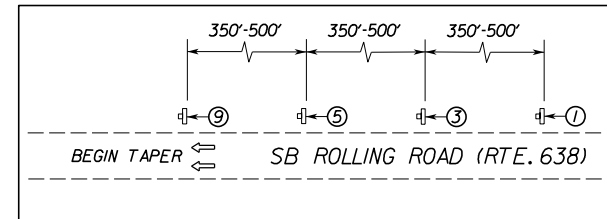
### LEGEND

- WORK ZONE AREA
- PAVEMENT CONSTRUCTED IN PHASE 1
- GROUP 2 CHANNELIZING DEVICE
- TYPE 3 BARRICADE
- ARROW BOARD ON TRAILER
- SIGN
- EXISTING DIRECTION OF TRAVEL
- TEMPORARY DIRECTION OF TRAVEL
- WORK VEHICLE
- FLAGGER SERVICE

### NOTES

- 1) SEE SHEET 1K17 FOR SIGN LEGEND.
- 2) PROJECT LIMITS SIGNING SHALL BE IN ACCORDANCE WITH FIGURE TTC-53.0 OF THE 2011 WAPM.
- 3) MAINTAIN ACCESS TO ENTRANCES THROUGHOUT DURATION OF CONSTRUCTION.
- 4) ALL CHANNELIZING DEVICE SPACING SHALL BE IN ACCORDANCE WITH TABLE 6H-4 OF THE 2011 WAPM.
- 5) EXISTING PAVEMENT MARKINGS THAT CONFLICT WITH PROPOSED TEMPORARY LANE MARKINGS SHALL BE COMPLETELY ERADICATED.

WORKZONE APPROACH DETAIL 4  
(FIGURE TTC-41J)  
N.T.S.



**R.O.W. PLANS**

THESE PLANS ARE UNFINISHED AND UNAPPROVED AND ARE NOT TO BE USED FOR ANY TYPE OF CONSTRUCTION.

PROJECT	SHEET NO.
0638-029-156	1K(18)