

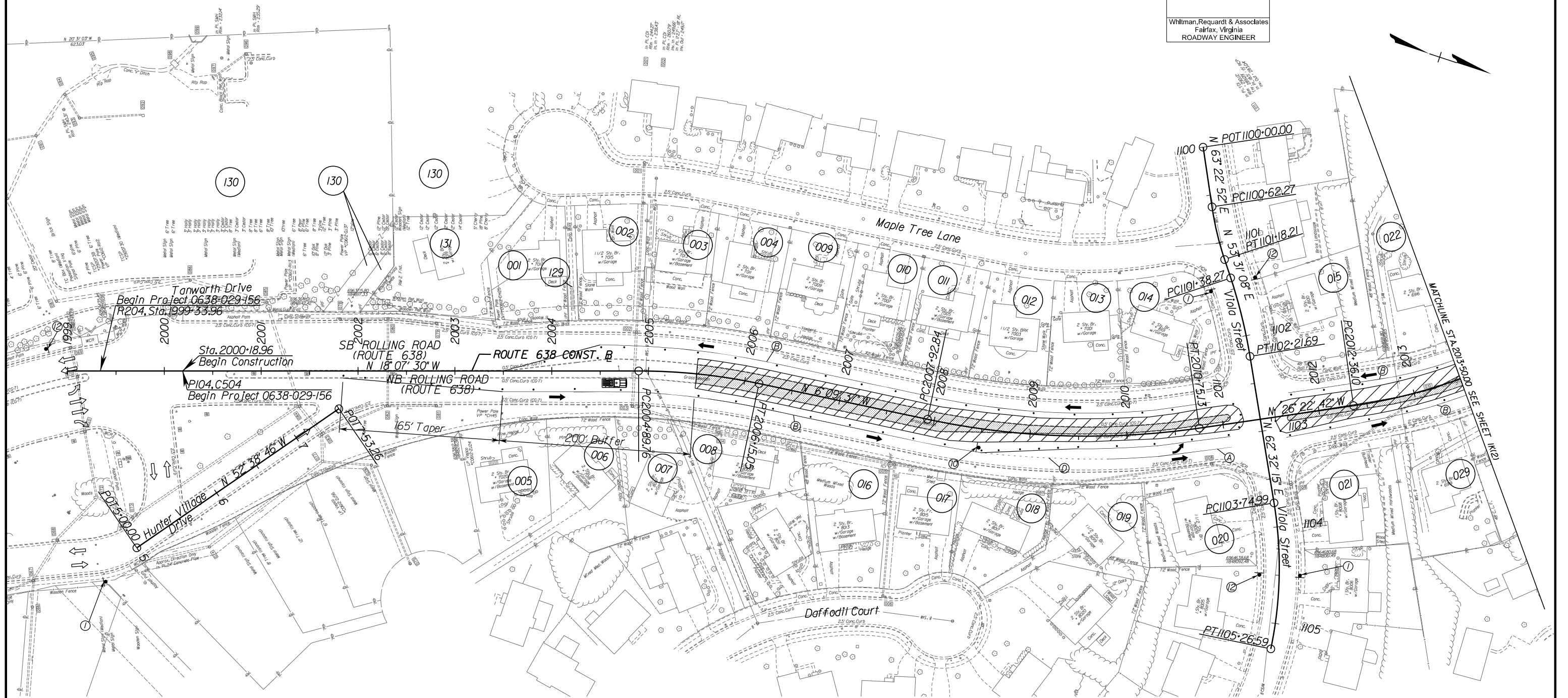
PROJECT MANAGER: Chris Barksdale, PE (703) 259-2768 JNOVA
SURVEYED BY, DATE: Brian Elstner, L.S. (703) 259-2355 JNOVA, August 2015
DESIGN BY: Tyler Long, PE - Whitman, Reardon & Associates, (703) 293-9072
SUBSURFACE UTILITY BY, DATE: So-Deep, Inc., (703) 361-6005, August 2015

TRANSPORTATION MANAGEMENT PLAN PHASE 1

REVISED	STATE	ROUTE	STATE PROJECT	SHEET NO.
	VA.	638	0638-029-156 P-104, R-204, C-504	1K(1)

DESIGN FEATURES RELATING TO CONSTRUCTION OR TO REGULATION AND CONTROL OF TRAFFIC MAY BE SUBJECT TO CHANGE AS DEEMED NECESSARY BY THE DEPARTMENT

Whitman, Reardon & Associates
Fairfax, Virginia
ROADWAY ENGINEER



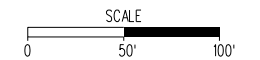
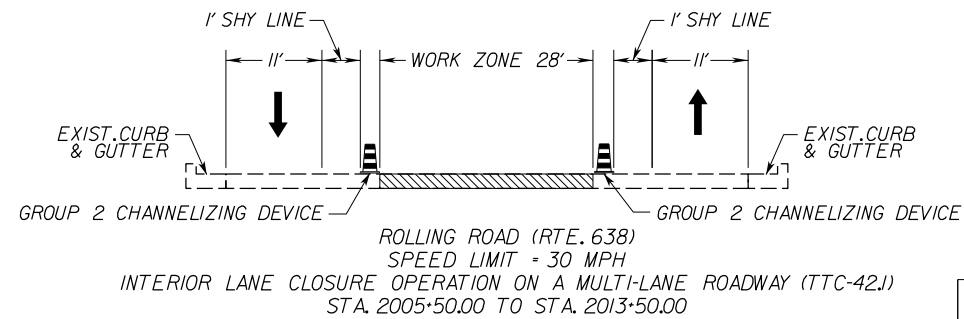
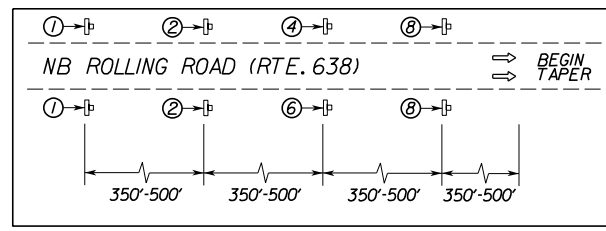
LEGEND

- WORK ZONE AREA
- TEMPORARY PAVEMENT
- GROUP 2 CHANNELIZING DEVICE
- TYPE 3 BARRICADE
- TRAFFIC BARRIER SERVICE
- TL-2 TEMP. ATTENUATOR
- SIGN
- EXISTING DIRECTION OF TRAVEL
- TEMPORARY DIRECTION OF TRAVEL
- WORK VEHICLE

NOTES

- 1) SEE SHEET 1K(1) FOR SIGN LEGEND.
- 2) PROJECT LIMITS SIGNING SHALL BE IN ACCORDANCE WITH FIGURE TTC-53.0 OF THE 2011WAPM.
- 3) INTERIOR LANE CLOSURE ON ROLLING ROAD SHALL BE IN ACCORDANCE WITH TTC-42.1 OF THE 2011WAPM.
- 4) MAINTAIN ACCESS TO ENTRANCES THROUGHOUT DURATION OF CONSTRUCTION.
- 5) TEMPORARY PAVEMENT SECTION SHALL CONSIST OF 2" OF ASPHALT CONCRETE TYPE 1M-19.0A, 4" OF ASPHALT CONCRETE TYPE 1M-25.0A, AND 6" OF AGGREGATE BASE MATERIAL TYPE 1NO.21B.
- 6) ALL CHANNELIZING DEVICE SPACING SHALL BE IN ACCORDANCE WITH TABLE 6H-4 OF THE 2011WAPM.
- 7) TEMPORARY PAVEMENT MARKINGS ARE SHOWN AS REQUIRED FOR CONSTRUCTION OF THIS PHASE. EXISTING PAVEMENT MARKINGS THAT CONFLICT WITH THE PROPOSED TEMPORARY MARKINGS SHALL BE COMPLETELY ERADICATED.

WORKZONE APPROACH DETAIL 1
(FIGURE TTC-42.1)
N.T.S.



R.O.W. PLANS

THESE PLANS ARE UNFINISHED AND UNAPPROVED AND ARE NOT TO BE USED FOR ANY TYPE OF CONSTRUCTION.

PROJECT	SHEET NO.
0638-029-156	1K(1)

PROJECT MANAGER: Chris Barksdale, PE (703) 259-2768 JNOVA
SURVEYED BY: DATE Brian Eltelcher, L.S. (703) 259-2355 JNOVA, August 2015
DESIGN BY: Tyler Long, PE - Whitman, Requardt & Associates, (703) 293-9072
SUBSURFACE UTILITY BY: DATE So-Deep, Inc., (703) 3616005, August 2015

TRANSPORTATION MANAGEMENT PLAN PHASE 1

REVISED	STATE	ROUTE	STATE PROJECT	SHEET NO.
	VA.	638	0638-029-156 P-104, R-204, C-504	1K(2)
DESIGN FEATURES RELATING TO CONSTRUCTION OR TO REGULATION AND CONTROL OF TRAFFIC MAY BE SUBJECT TO CHANGE AS DEEMED NECESSARY BY THE DEPARTMENT				
Whitman, Requardt & Associates Fairfax, Virginia ROADWAY ENGINEER				

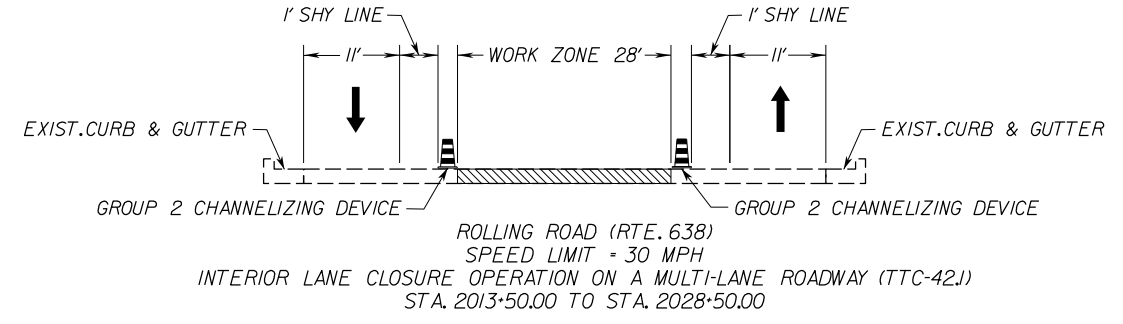


LEGEND

- WORK ZONE AREA
- TEMPORARY PAVEMENT
- GROUP 2 CHANNELIZING DEVICE
- TYPE 3 BARRICADE
- TRAFFIC BARRIER SERVICE
- TL-2 TEMP. ATTENUATOR
- SIGN
- EXISTING DIRECTION OF TRAVEL
- TEMPORARY DIRECTION OF TRAVEL
- WORK VEHICLE

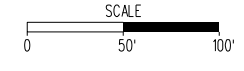
NOTES

- 1) SEE SHEET 1(K1) FOR SIGN LEGEND.
- 2) PROJECT LIMITS SIGNING SHALL BE IN ACCORDANCE WITH FIGURE TTC-53.0 OF THE 2011 WAPM.
- 3) INTERIOR LANE CLOSURE ON ROLLING ROAD SHALL BE IN ACCORDANCE WITH FIGURE TTC-42.1 OF THE 2011 WAPM.
- 4) MAINTAIN ACCESS TO ENTRANCES THROUGHOUT DURATION OF CONSTRUCTION.
- 5) TEMPORARY PAVEMENT SECTION SHALL CONSIST OF 2" OF ASPHALT CONCRETE TYPE 1M-19.0A, 4" OF ASPHALT CONCRETE TYPE 1M-25.0A, AND 6" OF AGGREGATE BASE MATERIAL TYPE 1 NO. 21B.
- 6) ALL CHANNELIZING DEVICE SPACING SHALL BE IN ACCORDANCE WITH TABLE 6H-4 OF THE 2011 WAPM.
- 7) EXISTING PAVEMENT MARKINGS THAT CONFLICT WITH PROPOSED TEMPORARY LANE MARKINGS SHALL BE COMPLETELY ERADICATED.



R.O.W. PLANS

THESE PLANS ARE UNFINISHED AND UNAPPROVED AND ARE NOT TO BE USED FOR ANY TYPE OF CONSTRUCTION.



PROJECT	SHEET NO.
0638-029-156	1K(2)

PROJECT MANAGER: Chris Barksdale, PE (703) 259-2768 JNQ/AL
SURVEYED BY, DATE: Brian Eitelcher, L.S. (703) 259-2355 JNQ/AL, August 2015
DESIGN BY: Tyler Long, PE - Whitman, Requardt & Associates, (703) 293-9172
SUBSURFACE UTILITY BY, DATE: So-Deep, Inc., (703) 361-6005, August 2015

TRANSPORTATION MANAGEMENT PLAN PHASE 1

REVISED	STATE	ROUTE	STATE PROJECT	SHEET NO.
	VA.	638	0638-029-156 P-104, R-204, C-504	1K(3)

DESIGN FEATURES RELATING TO CONSTRUCTION OR TO REGULATION AND CONTROL OF TRAFFIC MAY BE SUBJECT TO CHANGE AS DEEMED NECESSARY BY THE DEPARTMENT

Whitman, Requardt & Associates
Fairfax, Virginia
ROADWAY ENGINEER

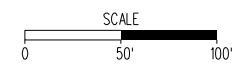
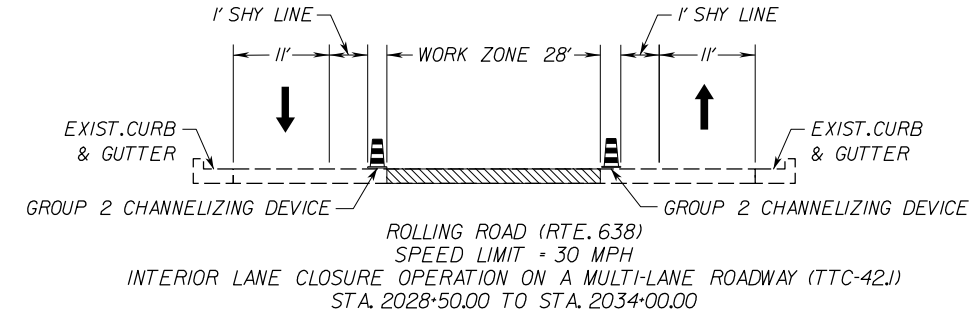


LEGEND

- WORK ZONE AREA
- TEMPORARY PAVEMENT
- GROUP 2 CHANNELIZING DEVICE
- TYPE 3 BARRICADE
- TRAFFIC BARRIER SERVICE
- TL-2 TEMP. ATTENUATOR
- SIGN
- EXISTING DIRECTION OF TRAVEL
- TEMPORARY DIRECTION OF TRAVEL
- WORK VEHICLE

NOTES

- 1) SEE SHEET 1K(1) FOR SIGN LEGEND.
- 2) PROJECT LIMITS SIGNING SHALL BE IN ACCORDANCE WITH FIGURE TTC-53.0 OF THE 2011WAPM.
- 3) INTERIOR LANE CLOSURE ON ROLLING ROAD SHALL BE IN ACCORDANCE WITH FIGURE TTC-42.1 OF THE 2011WAPM.
- 4) MAINTAIN ACCESS TO ENTRANCES THROUGHOUT DURATION OF CONSTRUCTION.
- 5) TEMPORARY PAVEMENT SECTION SHALL CONSIST OF 2" OF ASPHALT CONCRETE TYPE IM-19.0A, 4" OF ASPHALT CONCRETE TYPE BM-25.0A, AND 6" OF AGGREGATE BASE MATERIAL TYPE 1N0.21B.
- 6) ALL CHANNELIZING DEVICE SPACING SHALL BE IN ACCORDANCE WITH TABLE 6H-4 OF THE 2011WAPM.
- 7) EXISTING PAVEMENT MARKINGS THAT CONFLICT WITH PROPOSED TEMPORARY LANE MARKINGS SHALL BE COMPLETELY ERADICATED.



R.O.W. PLANS

THESE PLANS ARE UNFINISHED AND UNAPPROVED AND ARE NOT TO BE USED FOR ANY TYPE OF CONSTRUCTION.

PROJECT	SHEET NO.
0638-029-156	1K(3)

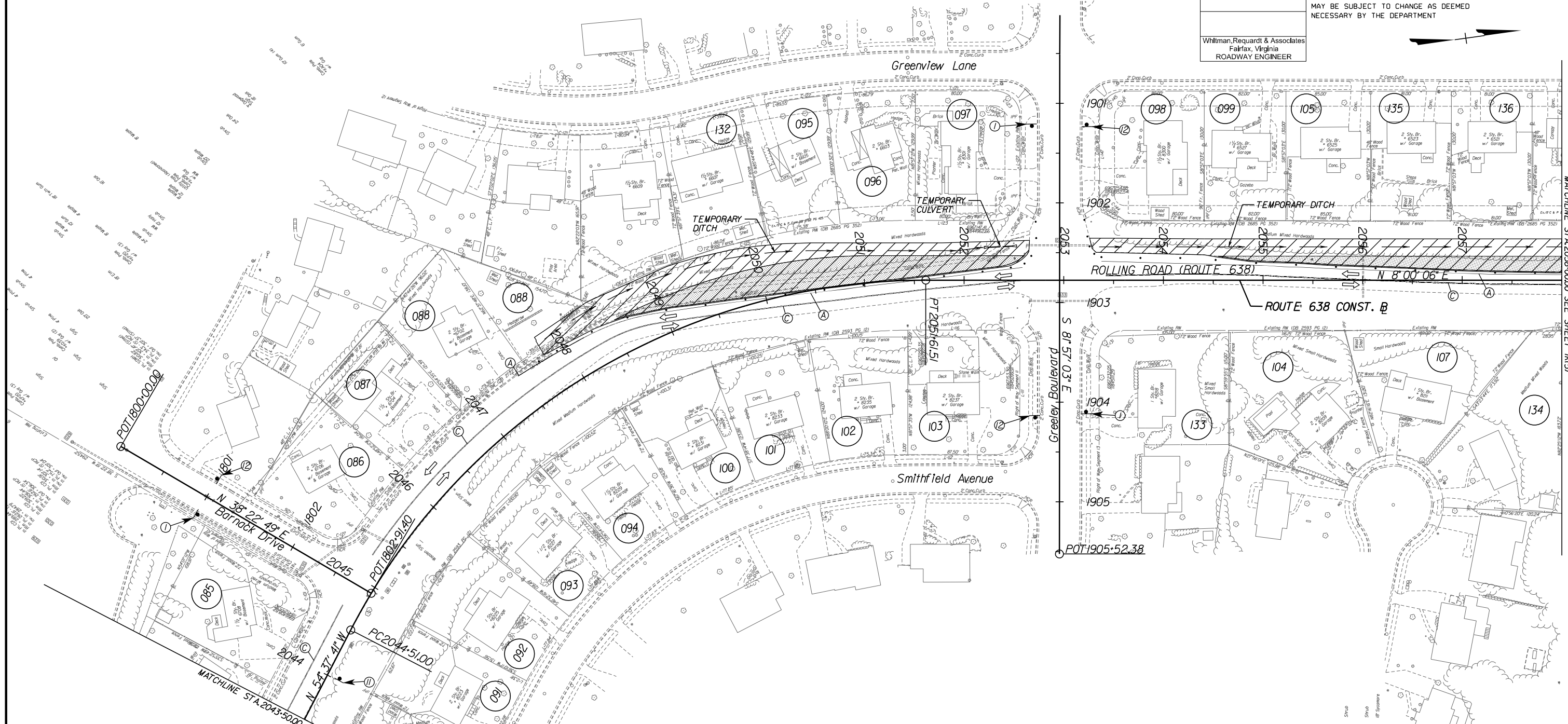
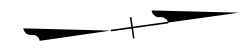
PROJECT MANAGER: Chris Barksdale, PE (703) 259-2768 JNQ/AL
SURVEYED BY, DATE: Brian Eltcher, L.S. (703) 259-2355 JNQ/AL, August 2015
DESIGN BY: Tyler Long, PE - Whitman, Requardt & Associates, (703) 293-9072
SUBSURFACE UTILITY BY, DATE: So-Deep, Inc., (703) 361-6005, August 2015

TRANSPORTATION MANAGEMENT PLAN PHASE 1

REVISED	STATE	ROUTE	STATE PROJECT	SHEET NO.
	VA.	638	0638-029-156 P-104, R-204, C-504	1K(4)

DESIGN FEATURES RELATING TO CONSTRUCTION OR TO REGULATION AND CONTROL OF TRAFFIC MAY BE SUBJECT TO CHANGE AS DEEMED NECESSARY BY THE DEPARTMENT

Whitman, Requardt & Associates
Fairfax, Virginia
ROADWAY ENGINEER

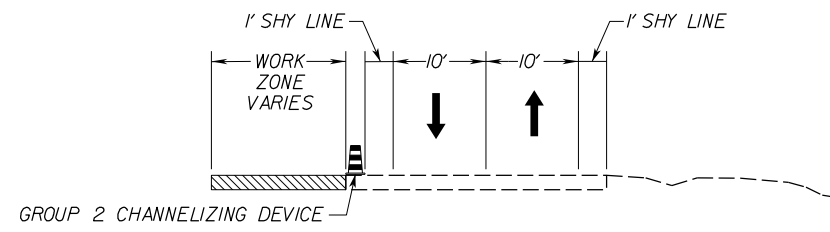


LEGEND

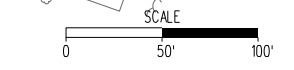
- WORK ZONE AREA
- TEMPORARY PAVEMENT
- GROUP 2 CHANNELIZING DEVICE
- TYPE 3 BARRICADE
- TRAFFIC BARRIER SERVICE
- TL-2 TEMP. ATTENUATOR
- SIGN
- EXISTING DIRECTION OF TRAVEL
- TEMPORARY DIRECTION OF TRAVEL
- WORK VEHICLE

NOTES

- 1) SEE SHEET 1K(1) FOR SIGN LEGEND.
- 2) PROJECT LIMITS SIGNING SHALL BE IN ACCORDANCE WITH FIGURE TTC-53.0 OF THE 2011 WAPM.
- 3) SHOULDER OPERATION WITH MINOR ENCROACHMENT SHALL BE IN ACCORDANCE WITH FIGURE TTC-5J OF THE WAPM.
- 4) MAINTAIN ACCESS TO ENTRANCES THROUGHOUT DURATION OF CONSTRUCTION.
- 5) TEMPORARY PAVEMENT SECTION SHALL CONSIST OF 2" OF ASPHALT CONCRETE TYPE 1M-190A, 4" OF ASPHALT CONCRETE TYPE BM-250A AND 6" OF AGGREGATE BASE MATERIAL TYPE 1NO.2/B.
- 6) ALL CHANNELIZING DEVICE SPACING SHALL BE IN ACCORDANCE WITH TABLE 6H-4 OF THE 2011 WAPM.
- 7) EXISTING PAVEMENT MARKINGS THAT CONFLICT WITH PROPOSED TEMPORARY LANE MARKINGS SHALL BE COMPLETELY ERADICATED.



ROLLING ROAD (RTE. 638)
SPEED LIMIT - 30 MPH
SHOULDER OPERATION WITH MINOR ENCROACHMENT (TTC-5J)
STA. 2047+50.00 TO STA. 2052+70.00
STA. 2053+25.00 TO STA. 2058+00.00



R.O.W. PLANS
THESE PLANS ARE UNFINISHED AND UNAPPROVED AND ARE NOT TO BE USED FOR ANY TYPE OF CONSTRUCTION.

PROJECT	SHEET NO.
0638-029-156	1K(4)

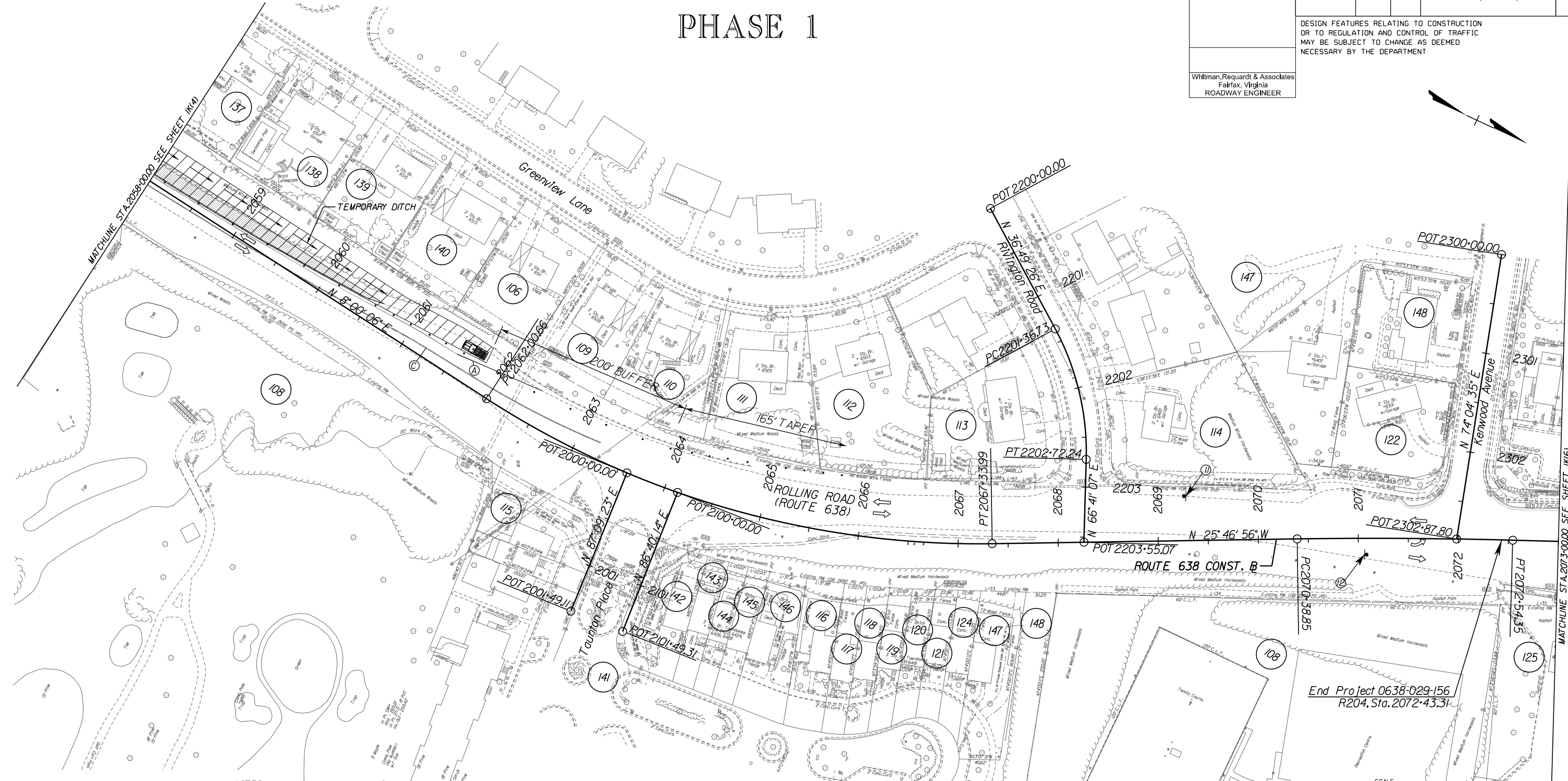
PROJECT MANAGER: Chris Barksdale, PE (703) 259-2768, INOVA
SURVEYED BY, DATE: Brian Eitelcher, L.S. (703) 259-2355, INOVA, August 2015
DESIGN BY: Tyler Long, P.E., Whitman, Requardt & Associates, (703) 293-9072
SUBSURFACE UTILITY BY, DATE: So Deep, Inc., (703) 361-6005, August 2015

TRANSPORTATION MANAGEMENT PLAN PHASE 1

REVISED	STATE	ROUTE	STATE PROJECT	SHEET NO.
	VA.	638	0638-029-156 P-104, R-204, C-504	1K(5)

DESIGN FEATURES RELATING TO CONSTRUCTION OR TO REGULATION AND CONTROL OF TRAFFIC MAY BE SUBJECT TO CHANGE AS DEEMED NECESSARY BY THE DEPARTMENT

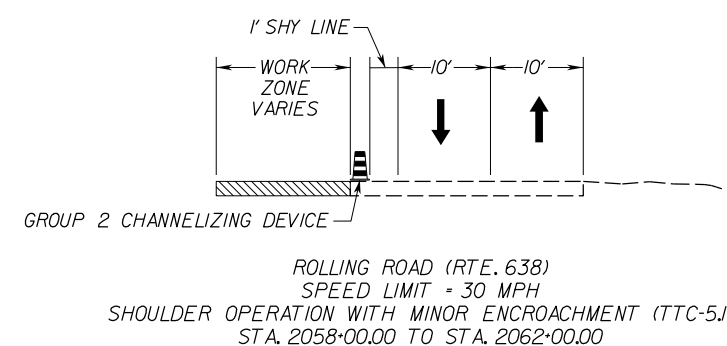
Whitman, Requardt & Associates
Fairfax, Virginia
ROADWAY ENGINEER



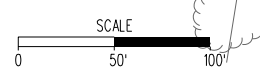
LEGEND

	WORK ZONE AREA
	TEMPORARY PAVEMENT
	GROUP 2 CHANNELIZING DEVICE
	TYPE 3 BARRICADE
	TRAFFIC BARRIER SERVICE
	TL-2 TEMP. ATTENUATOR
	SIGN
	EXISTING DIRECTION OF TRAVEL
	TEMPORARY DIRECTION OF TRAVEL
	WORK VEHICLE

- NOTES**
- 1) SEE SHEET 1K(1) FOR SIGN LEGEND.
 - 2) PROJECT LIMITS SIGNING SHALL BE IN ACCORDANCE WITH FIGURE TTC-53.D OF THE 2011WAPM.
 - 3) SHOULDER OPERATION WITH MINOR ENCROACHMENT SHALL BE IN ACCORDANCE WITH FIGURE TTC-5.J OF THE WAPM.
 - 4) MAINTAIN ACCESS TO ENTRANCES THROUGHOUT DURATION OF CONSTRUCTION.
 - 5) TEMPORARY PAVEMENT SECTION SHALL CONSIST OF 2" OF ASPHALT CONCRETE TYPE IM-19.0A, 4" OF ASPHALT CONCRETE TYPE BM-25.0A, AND 6" OF AGGREGATE BASE MATERIAL TYPE 1 NO.21B.
 - 6) ALL CHANNELIZING DEVICE SPACING SHALL BE IN ACCORDANCE WITH TABLE 6H-4 OF THE 2011WAPM.
 - 7) EXISTING PAVEMENT MARKINGS THAT CONFLICT WITH PROPOSED TEMPORARY LANE MARKINGS SHALL BE COMPLETELY ERADICATED.



End Project 0638-029-156
R204, Sta. 2072+43.31



R.O.W. PLANS

THESE PLANS ARE UNFINISHED AND UNAPPROVED AND ARE NOT TO BE USED FOR ANY TYPE OF CONSTRUCTION.

PROJECT	SHEET NO.
0638-029-156	1K(5)

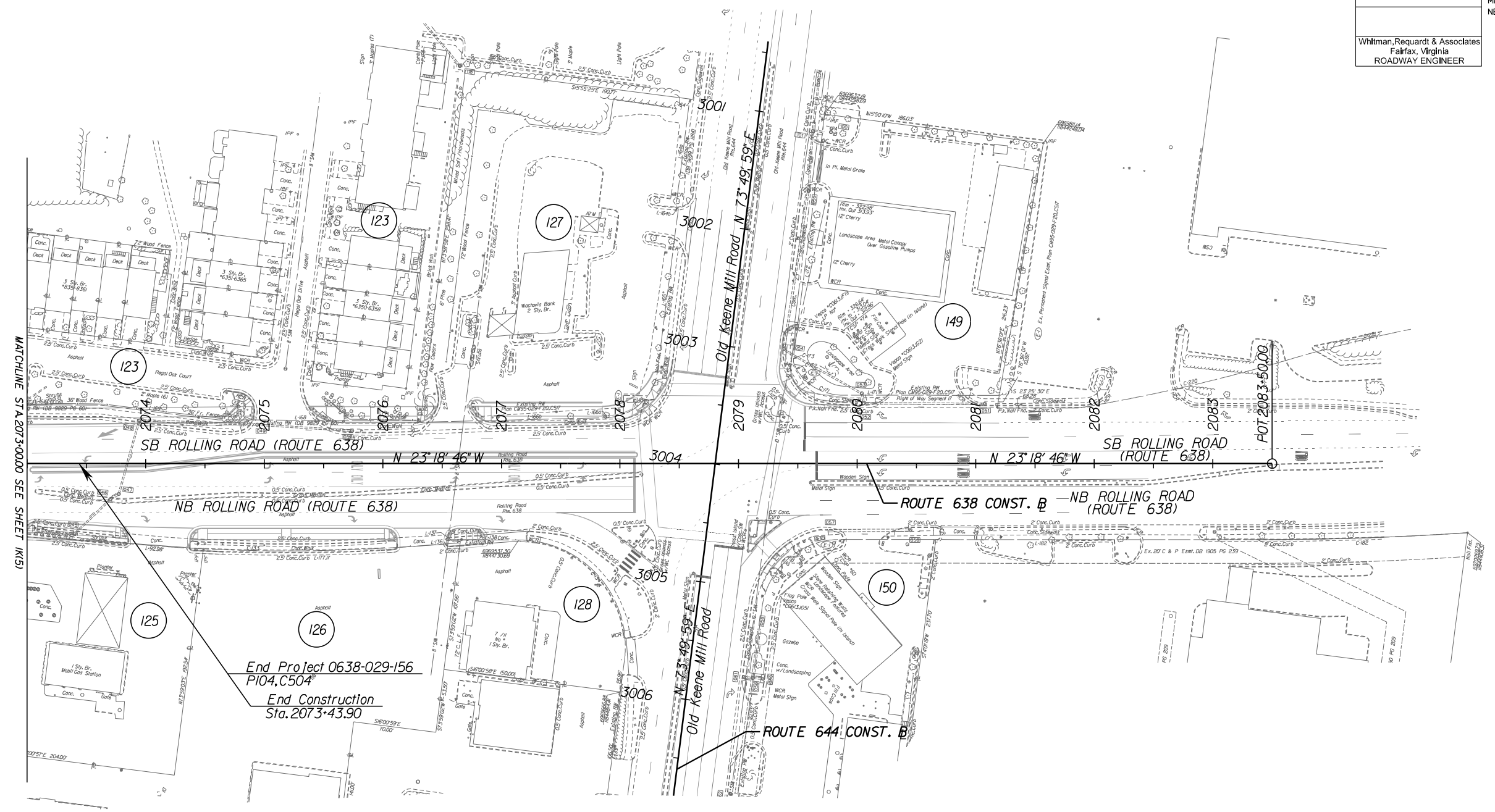
PROJECT MANAGER: Chris Barksdale, PE (703) 259-2768 JNOVA
SURVEYED BY, DATE: Brian Eitelcher, L.S. (703) 259-2355 JNOVA, August 2015
DESIGN BY: Tyler Long, PE. - Whitman, Requardt & Associates, (703) 293-9072
SUBSURFACE UTILITY BY, DATE: So-Deep, Inc., (703) 3616005, August 2015

TRANSPORTATION MANAGEMENT PLAN PHASE 1

REVISED	STATE	ROUTE	STATE PROJECT	SHEET NO.
	VA.	638	0638-029-156 P-104, R-204, C-504	1K(6)

DESIGN FEATURES RELATING TO CONSTRUCTION OR TO REGULATION AND CONTROL OF TRAFFIC MAY BE SUBJECT TO CHANGE AS DEEMED NECESSARY BY THE DEPARTMENT

Whitman, Requardt & Associates
Fairfax, Virginia
ROADWAY ENGINEER

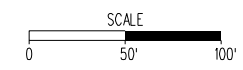


LEGEND

- WORK ZONE AREA
- TEMPORARY PAVEMENT
- GROUP 2 CHANNELIZING DEVICE
- TYPE 3 BARRICADE
- TRAFFIC BARRIER SERVICE
- TL-2 TEMP. ATTENUATOR
- SIGN
- EXISTING DIRECTION OF TRAVEL
- TEMPORARY DIRECTION OF TRAVEL
- WORK VEHICLE

NOTES

- 1.) SEE SHEET 1K(1) FOR SIGN LEGEND.
- 2.) PROJECT LIMITS SIGNING SHALL BE IN ACCORDANCE WITH FIGURE TTC-53.0 OF THE 2011WAPM.
- 3.) MAINTAIN ACCESS TO ENTRANCES THROUGHOUT DURATION OF CONSTRUCTION.
- 4.) TEMPORARY PAVEMENT SECTION SHALL CONSIST OF 2" OF ASPHALT CONCRETE TYPE IM-19.0A, 4" OF ASPHALT CONCRETE TYPE BM-25.0A AND 6" OF AGGREGATE BASE MATERIAL TYPE 1 NO.21B.
- 5.) ALL CHANNELIZING DEVICE SPACING SHALL BE IN ACCORDANCE WITH TABLE 6H-4 OF THE 2011WAPM.
- 6.) EXISTING PAVEMENT MARKINGS THAT CONFLICT WITH PROPOSED TEMPORARY LANE MARKINGS SHALL BE COMPLETELY ERADICATED.



R.O.W. PLANS

THESE PLANS ARE UNFINISHED AND UNAPPROVED AND ARE NOT TO BE USED FOR ANY TYPE OF CONSTRUCTION.

PROJECT	SHEET NO.
0638-029-156	1K(6)