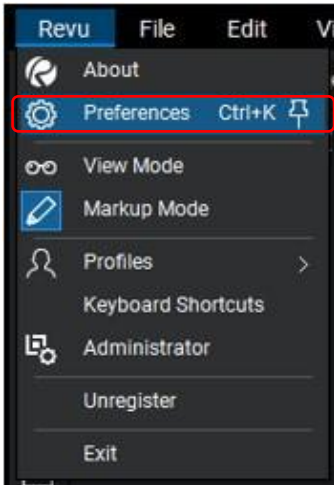


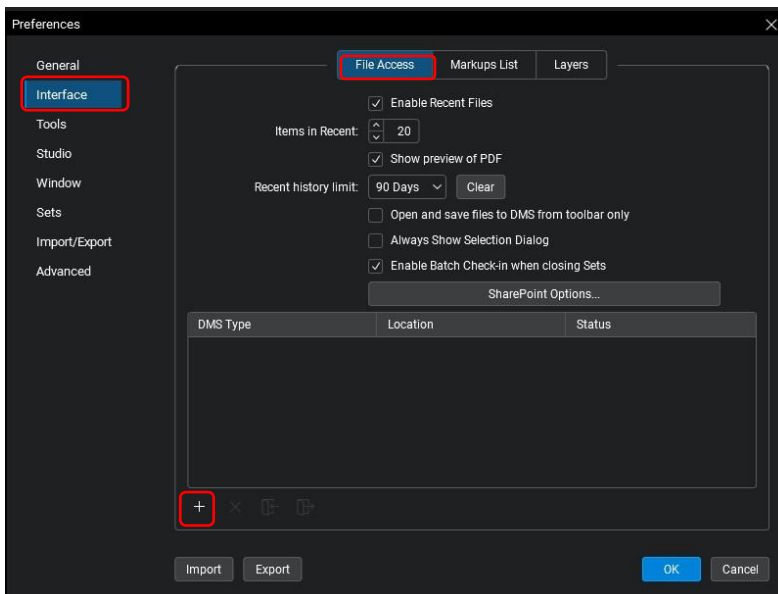
# Bluebeam – Setting Bluebeam up to recognize Project Database

Follow the below instructions to set Bluebeam Revu to recognize the ProjectWise Database.

- Open Bluebeam Revu
- Click Revu – upper left corner
- Click Preferences



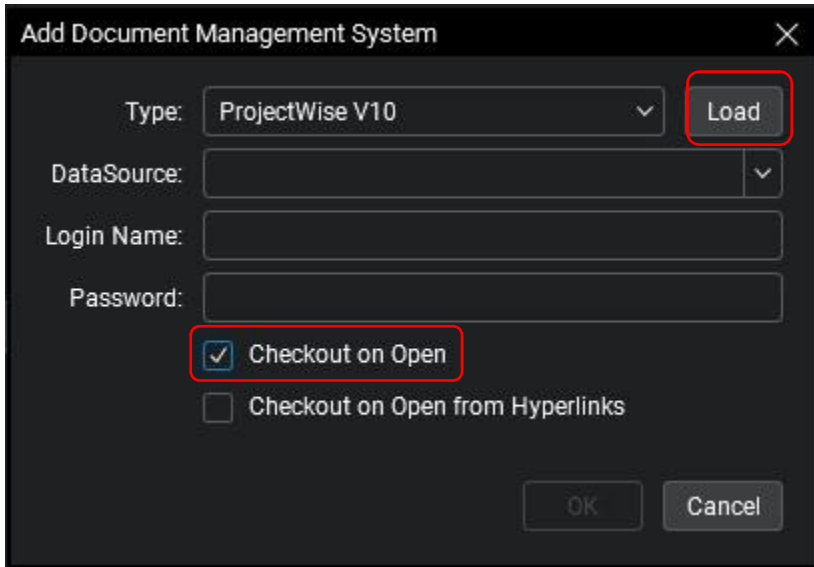
- You can also press CTRL+K to bring up the Preferences dialog box
- Click Interface
- Click File Access



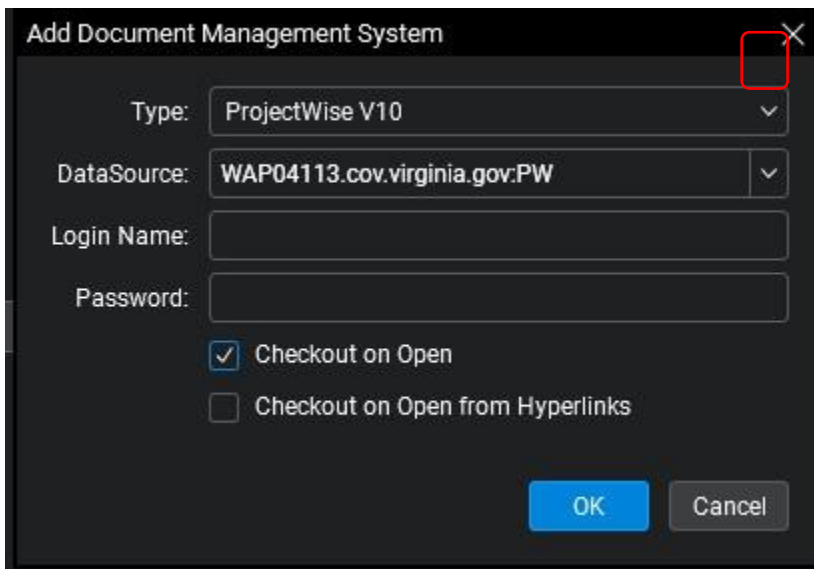
- To add a new source you will need to click the plus (+) button

# Bluebeam – Setting Bluebeam up to recognize Project Database

- This will open the Add Document Management System dialog box
- Your Type will always be ProjectWise V10
- Checkout on Open should always be checked
- Click Load



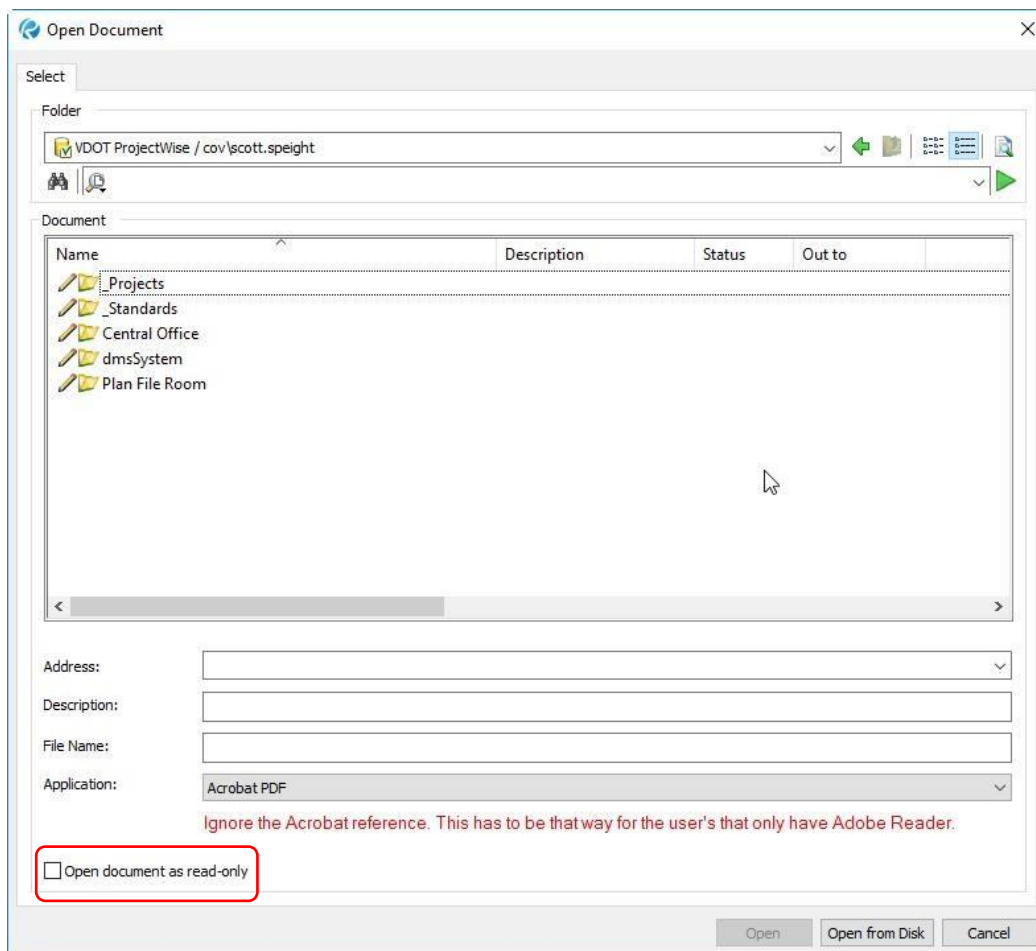
- Select the arrow next to Datasource – this will populate your Datasource options ○  
Select your District Caching Server or Central Office Datasource – this depends on your location
- Select OK to accept Datasource
- Select OK



# Bluebeam – Setting Bluebeam up to recognize Project Database

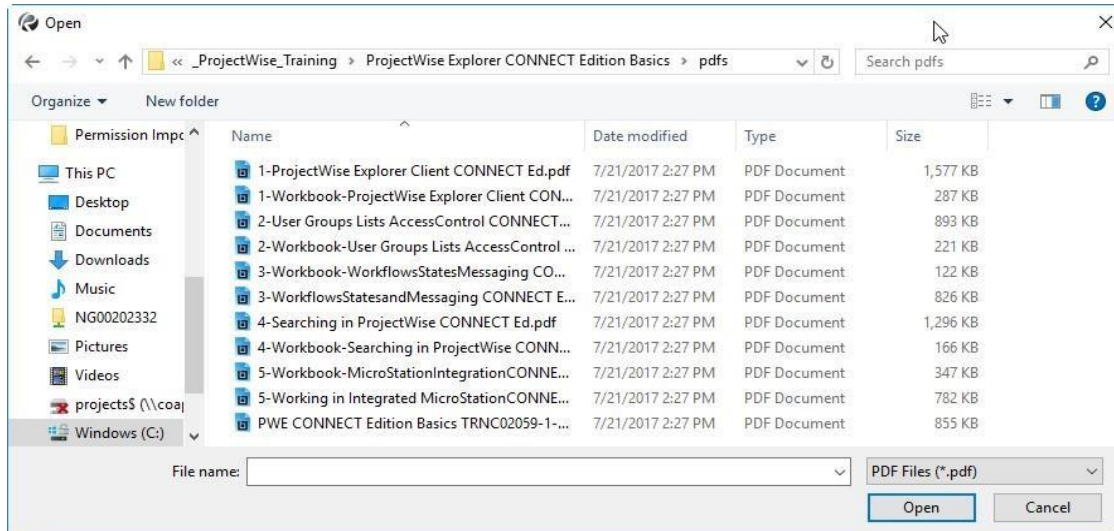
## Opening a ProjectWise Document in Bluebeam

- Open Bluebeam Revu
- Click File
- Click Open
  
- ProjectWise should login using your Windows credentials – if it does not then your username will be COV\networkID and your password will be your network login password
- You should now see the ProjectWise Datasource
- Navigate to the PDF that you want to open or view
- Check the box in the lower left corner if you want to view the document as read-only



# Bluebeam – Setting Bluebeam up to recognize Project Database

- You may still want to open files on your local disk or network drive by clicking on Open from Disk



- From this dialog you can navigate anywhere locally or on the network

If you need additional help with this setup or any other Bluebeam Revu or ProjectWise issue then please contact CADD Support.