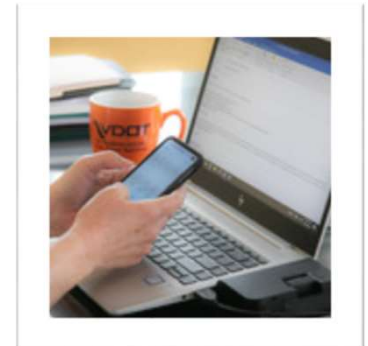


# Virtual Design Public Hearing Presentation





# Route 220 Corridor Intersection Improvements

City of Roanoke, Roanoke County, Franklin County, Henry County

UPC: 110887

Project No: 0220-962-050, P101, R201, M501

UPC: 115455

Project No: 0220-033-843, P101, R201, M501

## Previous Public Input

**VDOT received public comments on this project previously in fall 2020.**

**Based on the received comments some modifications have been made to the design that will be covered later in this public hearing.**

**VDOT received citizen requests to hold a public hearing.**



# Virtual Design Public Hearing in Response to Public Health

The virtual public hearing and VDOT website provides the same information as an in-person hearing:

- ✓ Project Information
- ✓ Estimated timeline
- ✓ Process for submitting comments
- ✓ Key contacts

**COVID-19**  
CORONAVIRUS DISEASE

## Share Facts About COVID-19

Know the facts about coronavirus disease 2019 (COVID-19) and help stop the spread of rumors.

**FACT 1** Diseases can make anyone sick regardless of their race or ethnicity.  
People of Asian descent, including Chinese Americans, are not more likely to get COVID-19 than any other American. Help stop fear by letting people know that being of Asian descent does not increase the chance of getting or spreading COVID-19.

**FACT 2** Some people are at increased risk of getting COVID-19.  
People who have been in close contact with a person known to have COVID-19 or people who live in or have recently been in an area with ongoing spread are at an increased risk of exposure.

**FACT 3** Someone who has completed quarantine or has been released from isolation does not pose a risk of infection to other people.  
For up-to-date information, visit CDC's coronavirus disease 2019 web page.

**FACT 4** You can help stop COVID-19 by knowing the signs and symptoms:  
• Fever  
• Cough  
• Shortness of breath  
Seek medical advice if you  
• Develop symptoms  
AND  
• Have been in close contact with a person known to have COVID-19 or if you live in or have recently been in an area with ongoing spread of COVID-19.

**FACT 5** There are simple things you can do to help keep yourself and others healthy.  
• Wash your hands often with soap and water for at least 20 seconds, especially after blowing your nose, coughing, or sneezing; going to the bathroom; and before eating or preparing food.  
• Avoid touching your eyes, nose, and mouth with unwashed hands.  
• Stay home when you are sick.  
• Cover your cough or sneeze with a tissue, then throw the tissue in the trash.

For more information: [www.cdc.gov/COVID19](http://www.cdc.gov/COVID19)



© 2020 H&H WOODS



# Virtual Design Public Hearing WebEx Process

- Attendees will be muted throughout the duration of the hearing.
- WebEx participants will have an opportunity to ask questions using “Chat” at the end of the presentation.
- The moderator will read the questions aloud, and they will be answered in the order received.
- Any individual who does not abide by our ground rules, or who submits anything inappropriate, will be removed from the meeting.

## Virtual Design Public Hearing Purpose

---

- 1. Inform the public of project status and present the current design.**
- 2. Describe the project so the public can determine how they may be affected.**
- 3. Provide the public the opportunity to provide input.**
- 4. Develop a record of public participation.**

# Virtual Design Public Hearing Agenda

1	• Welcome
2	• Public Comment Process
3	• Project History and Overview
4	• Project Details
5	• Environmental and Right of Way Overview
6	• Questions and Adjournment



# How to submit your comments for the Public Hearing Record

Please submit your comments regarding the design presented in this Virtual Design Public Hearing by using the methods below by our deadline of May 1, 2021.



## Email

[Route220Intersections@VDOT.Virginia.gov](mailto:Route220Intersections@VDOT.Virginia.gov)



## Mail

Virginia Department of Transportation  
ATTN: Brett Elledge  
731 Harrison Ave  
Salem, VA 24153



## Online Form

<https://www.virginiadot.org/route220Intersections/>

## PRESENTER



Alex Price  
VDOT  
Location & Design  
Engineer

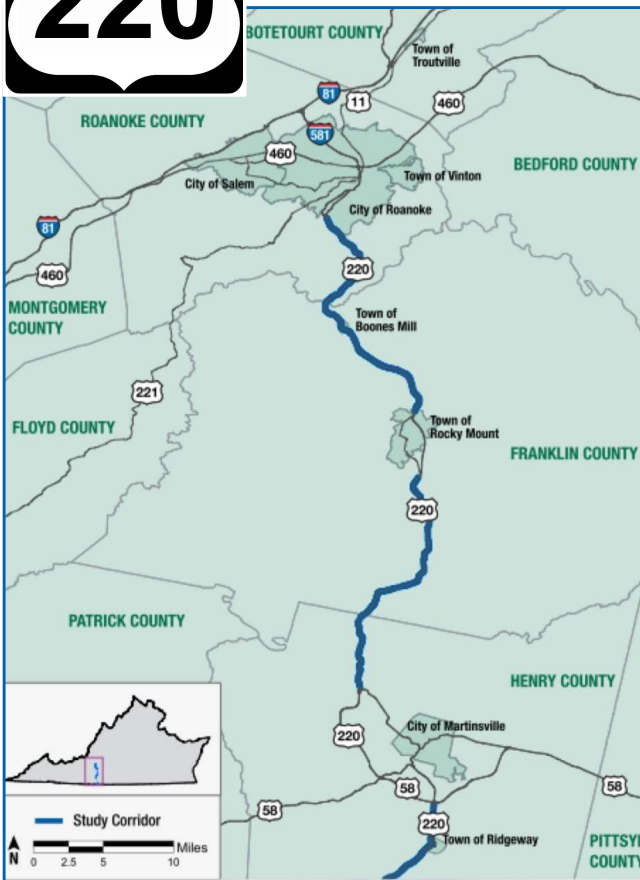
## MEETING MODERATOR



Kelly Dunn  
VDOT  
Meeting Moderator



## Route 220 Corridor Project History

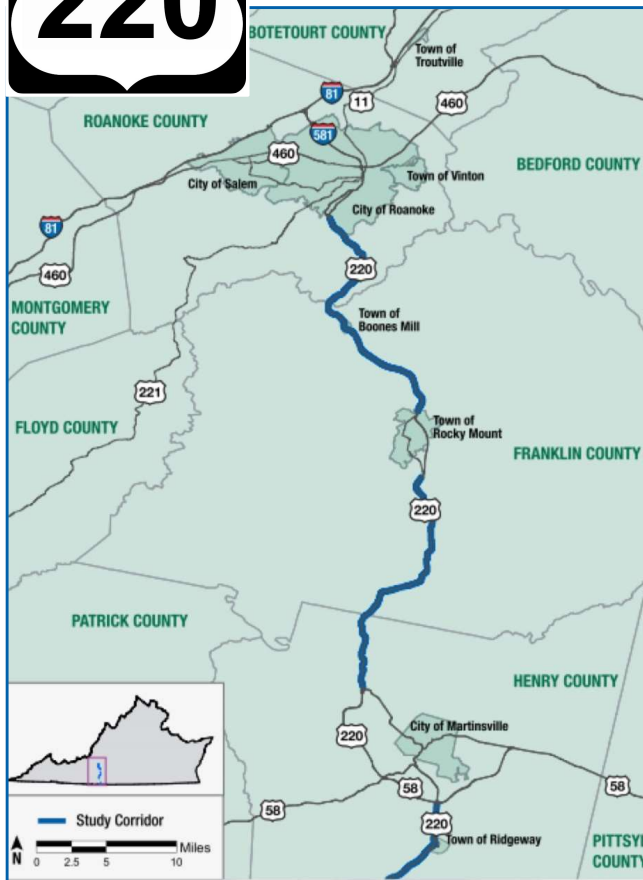


- Route 220 between Roanoke and Martinsville is a vital link for Virginia serving freight and commuter traffic and providing access into commercial businesses.
- VDOT has studied alternatives to improve safety and reduce congestion along this important corridor.
- A planning study was conducted from 2018 to 2020 to evaluate critical intersections on Route 220.
- In fall 2019, VDOT shared concepts for near-term and long-term improvements during a series of public meetings.

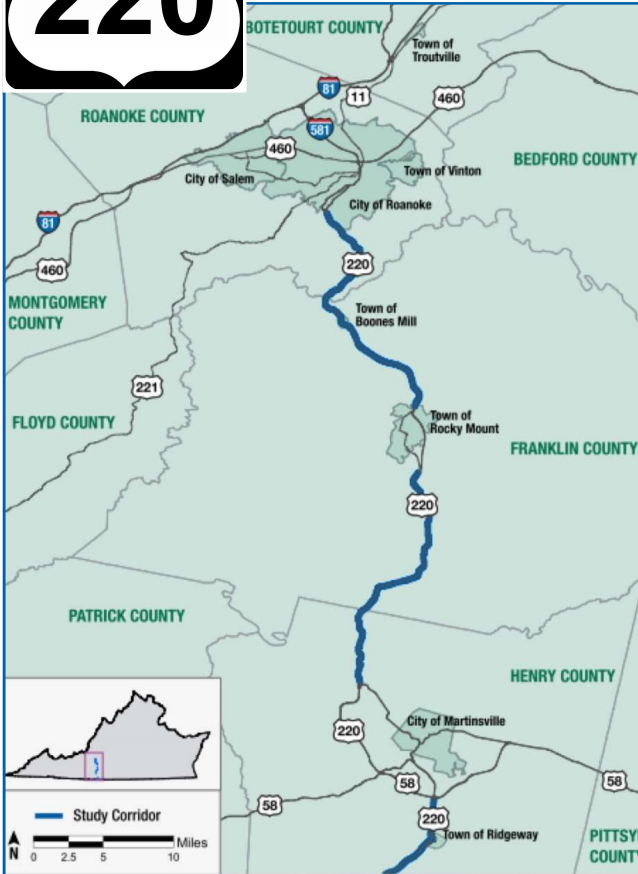




## Route 220 Corridor Project History



- In late 2019, VDOT began developing a project to replace the current interchange at Route 220 Expressway and Route 419 in Roanoke with a diverging diamond interchange.
- To achieve the maximum benefit from the future diverging diamond interchange, improvements at the adjacent signalized intersections on Route 220 are needed.
- The proposed intersection improvements along with the future diverging diamond interchange will improve the traffic flow and mobility of the entire Route 220 corridor.



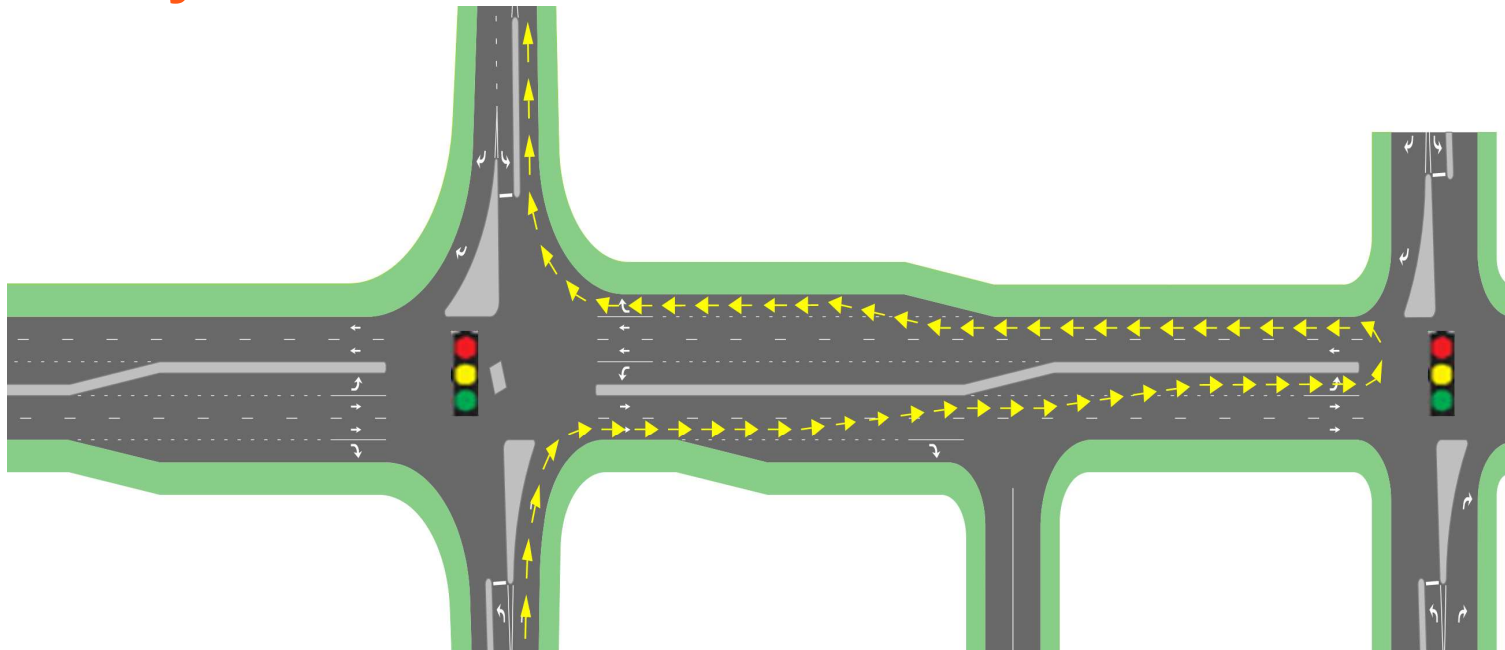
## Project Purpose

The purpose of this project is to:

- Modify seven signalized intersections between Roanoke and Martinsville using an innovative intersection design known as a thru-cut
- Increase efficiency and create shorter wait times along the Route 220 corridor
- Improve safety and reduce congestion

## What is a Thru-Cut?

A thru-cut intersection redirects side-street through traffic to turn left or right at the signal and to turn directly into businesses or to use a nearby crossover to make a U-turn.





# Thru-Cut Improvement Concept

## What's changing?

Reroutes very small through traffic volumes from side streets (approximately 1%)

Streamlines signal phasing to make all movements more efficient

Allows right turns from side streets to be controlled by a yield sign

Includes pedestrian accommodations as needed

## What stays the same?

Traffic signals will remain.

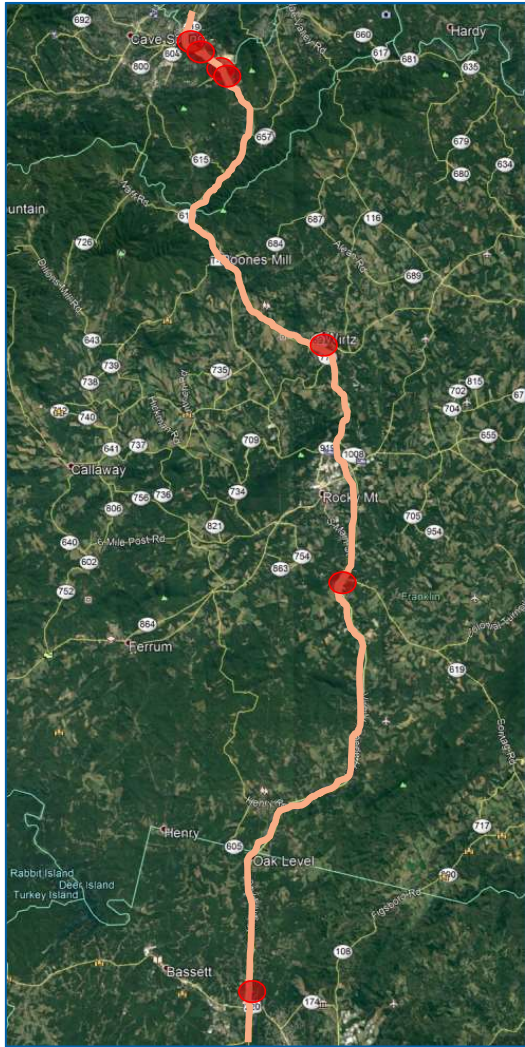
Left and right turns from side streets will be maintained.

All movements on Route 220 will stay the same.

# Route 220 Intersection Locations



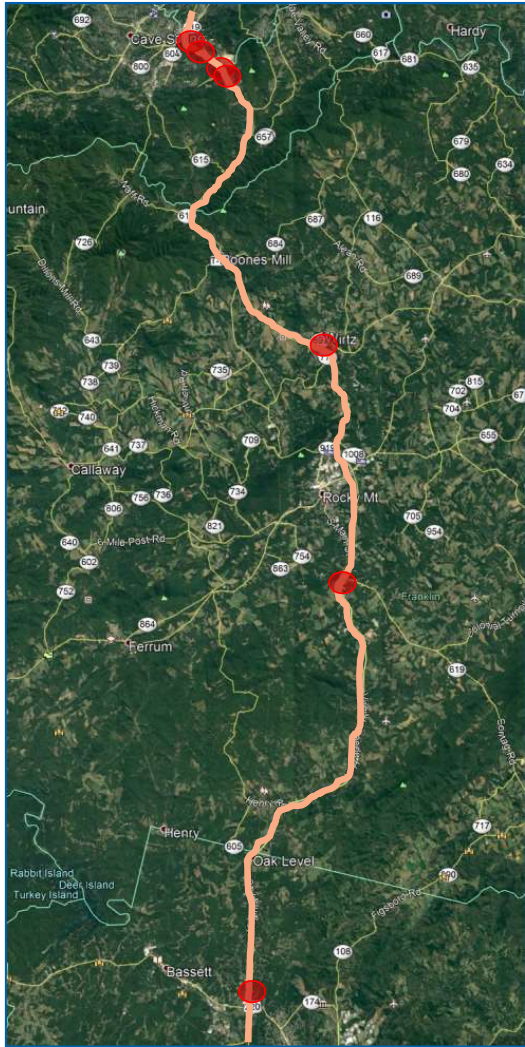
City of Roanoke/Roanoke County
A. Valley Avenue and Southern Hills Drive
B. Crossbow Circle and Pheasant Ridge Road
Roanoke County
C. Buck Mountain Road and Stable Road
D. Indian Grave Road and Clearbrook Village Lane
Franklin County
E. Wirtz Road and Virginia Market Place Drive
F. Sontag Road and Cassell Drive
Henry County
G. Dyer Street



## Benefits

- Increases efficiency and creates shorter wait times along the Route 220 corridor by reducing signal phases.
- Enhances safety by reducing stop and go traffic and rear-end collisions.
- Results in operational improvements that are similar to widening Route 220 from four lanes to six lanes, but at a fraction of the cost.



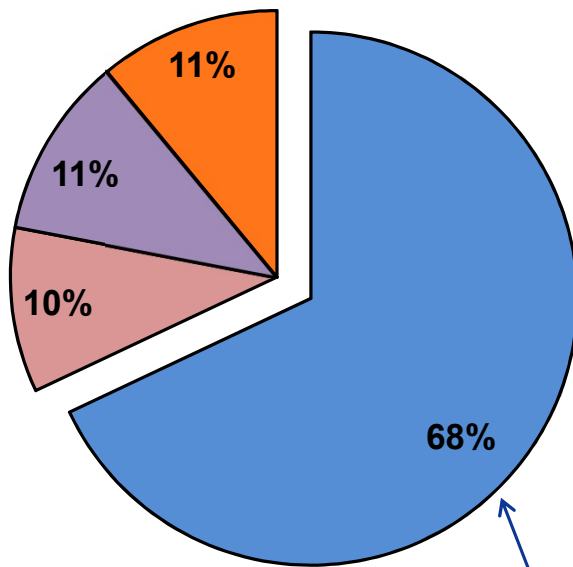


## Benefits

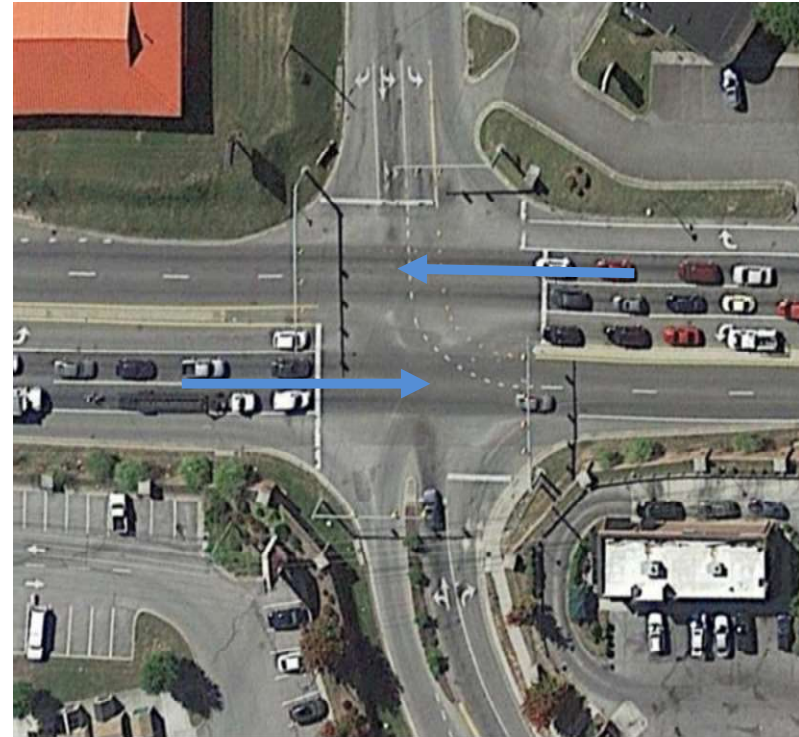
- Provides opportunities for enhancing pedestrian safety
- Maintains access to homes and businesses
- Facilitates future economic development

**Without these intersection improvements, traffic congestion is expected to constrain future growth and travel along the Route 220 Corridor between Roanoke and Martinsville.**

# Signal Operations-Phasing Example

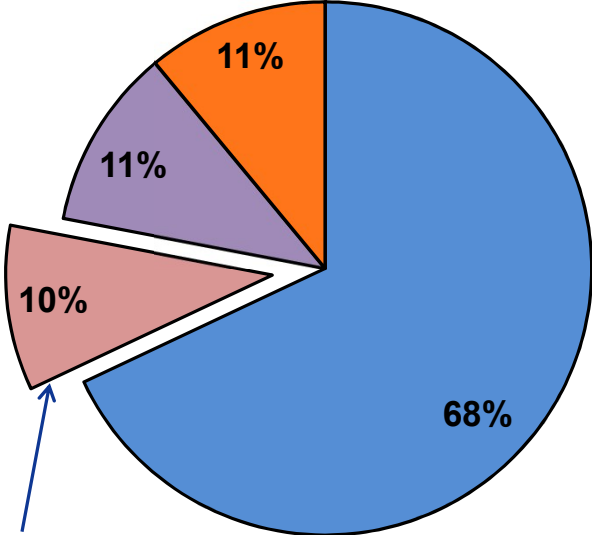


Percentage Of Green Time Provided To Route 220 Through Movements

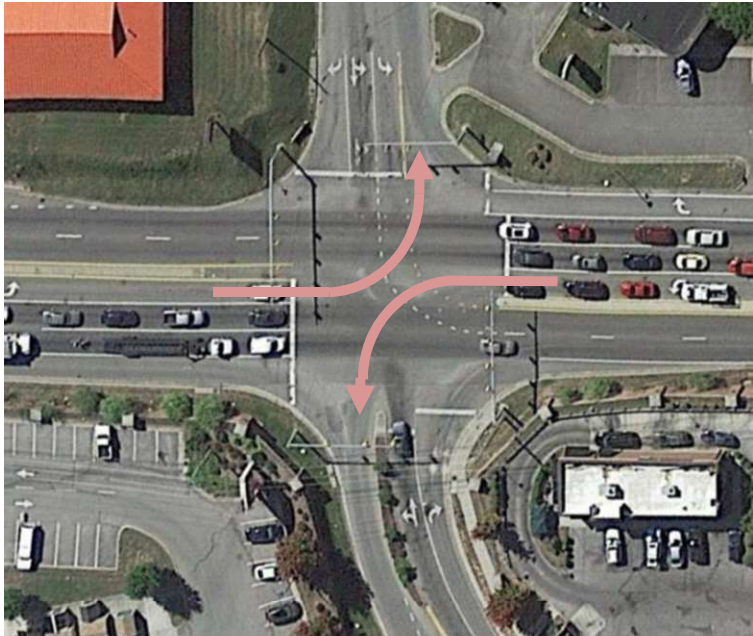


Valley Avenue & Route 220 Example Intersection

# Signal Operations-Phasing Example



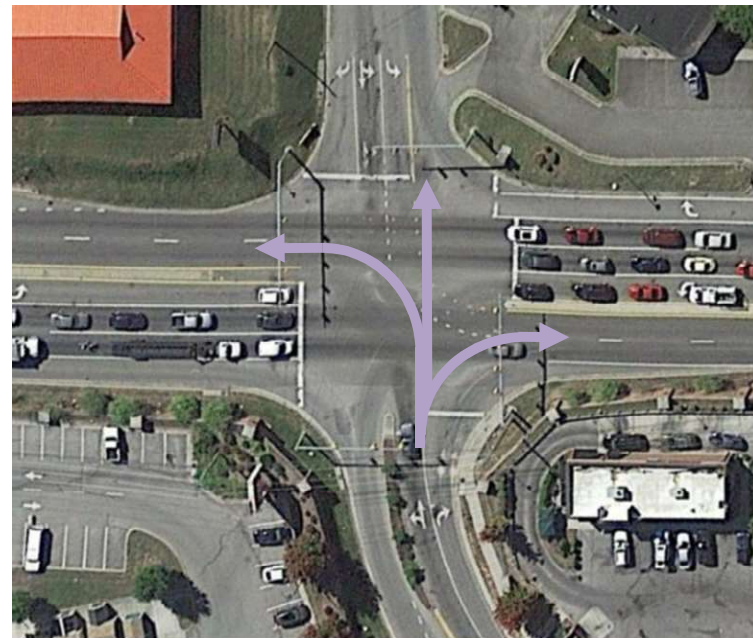
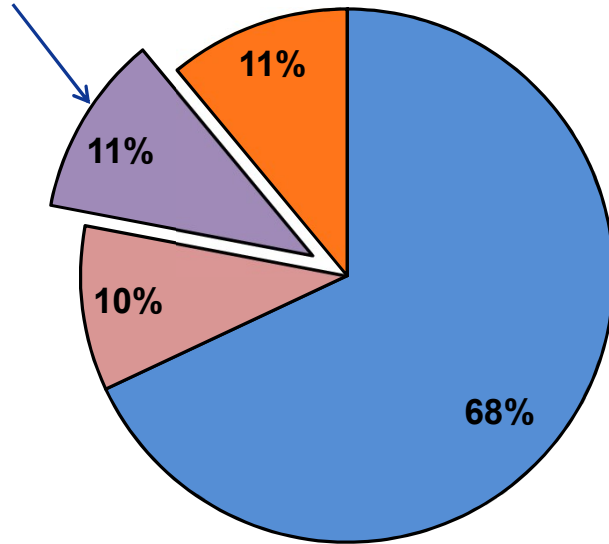
Percentage Of Green Time Provided To Route 220 Left Movements



Valley Avenue & Route 220 Example Intersection

# Signal Operations-Phasing Example

Percentage Of Green Time Provided To  
1st Side Street Movement

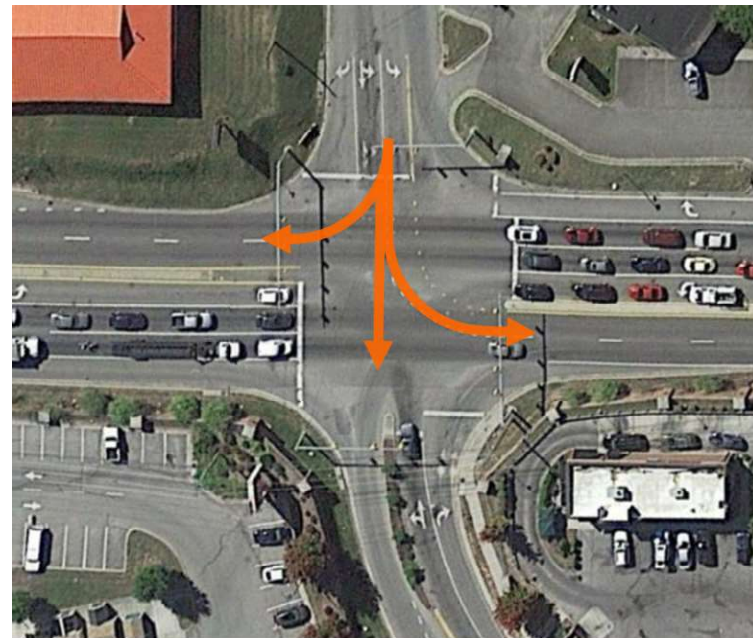
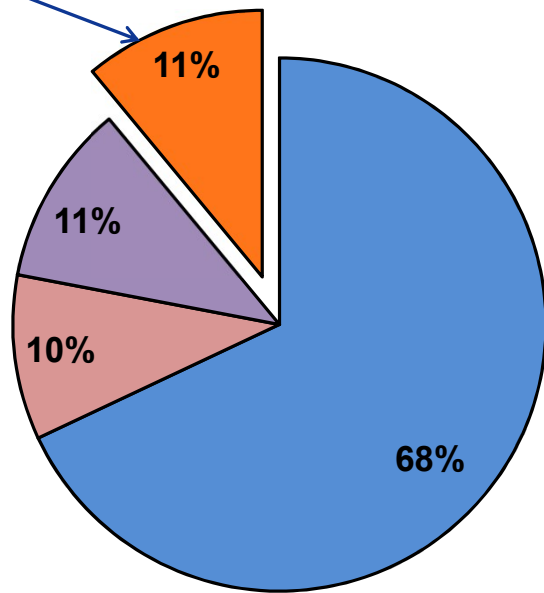


Valley Avenue & Route 220 Example Intersection



# Signal Operations-Phasing Example

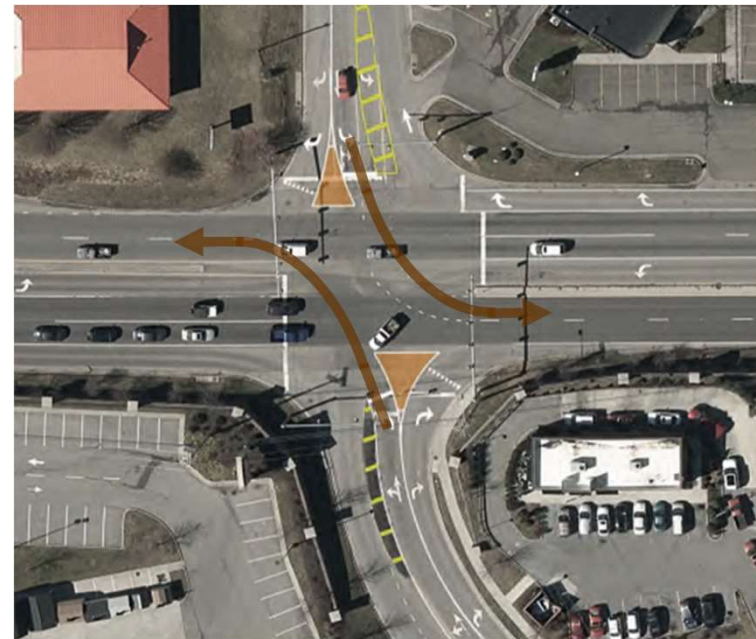
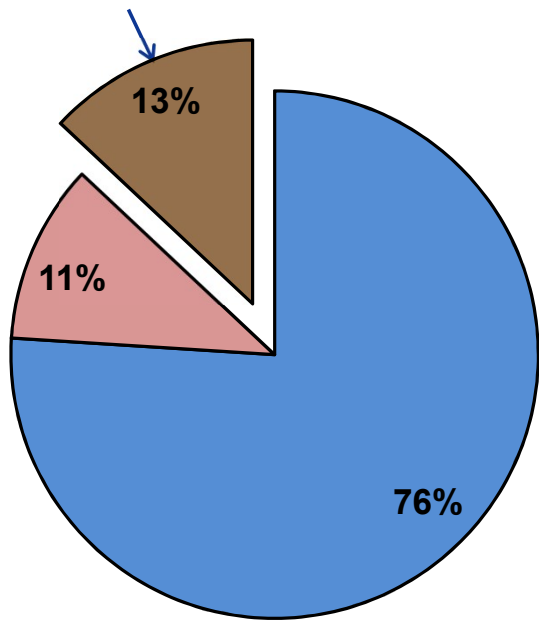
Typical Percentage Of Green Time Provided To 2nd Side Street Movement



Valley Avenue & Route 220 Example Intersection

# Signal Operations At Thru-Cut Intersections

Percentage Of Green Time Provided To Side Street Left Turns With Phase Reduction

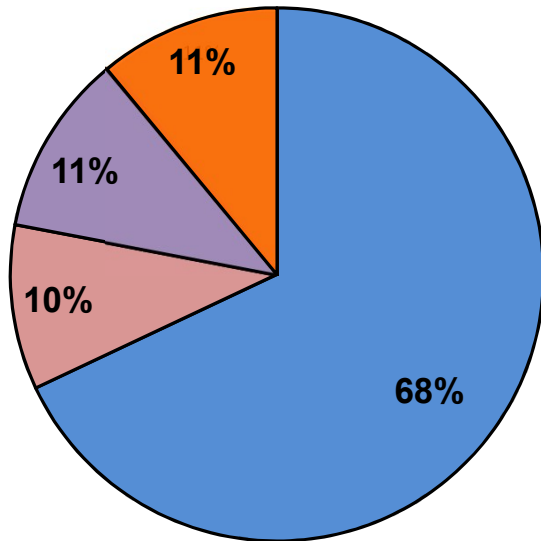


Valley Avenue & Route 220 Example Intersection



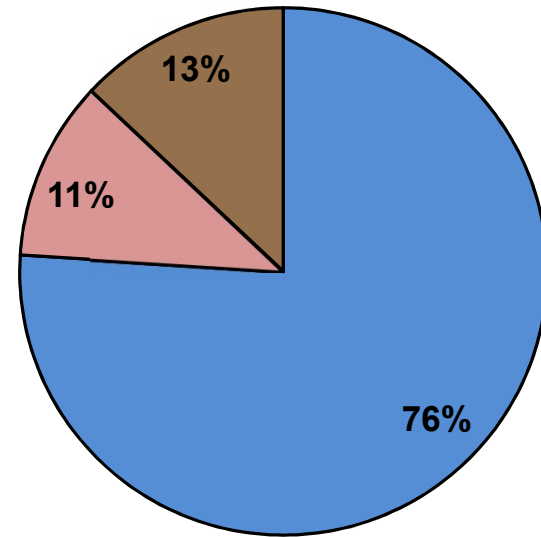
## Effect of Phase Reduction

### Without Thru-Cut



VS

### With Thru-Cut



### With Thru-Cut (3 Phase)

- Increased green time for all movements
- The increase in green time for Route 220 equates to a 20-24 percent reduction in delay.

# Anticipated Project Schedule

Milestones	Dates
Preliminary Engineering (PE)	Underway
Virtual Design Public Hearing	April 21, 2021
Begin R/W Acquisition	Early 2022
Advertise for Bids	Mid 2023
Construction Begin	Late 2023
Construction Completed	Fall 2024

# Project Funding & Estimate

## Anticipated Project Costs

Phase	Cost
Preliminary Engineering (PE)	\$2.4M
Right of Way (RW)	\$3.9M
Construction (CN)	\$9.8M
Total	\$16.1M

The project will be funded using federal and state funds.

## Previous Public Input

**VDOT received 380 comments on this project during our public outreach in the fall of 2020.**



## Points of Clarification

**No traffic signals are being removed.**

**All through and turning movements on Route 220 are maintained.**

**Left and right turns from side streets will still be allowed.**

**Vehicles will no longer be able to drive straight across Route 220.**



## Points of Clarification

### U-turn locations have been selected to:

- Take advantage of signals where possible
- Maximize sight distance
- Route traffic where dedicated turn lanes will be provided

Significant increases in the U-turn movements are not expected.





## Points of Clarification

Private roads or parking lots are not required to complete movements.

Emergency vehicle access will not be negatively impacted by the thru-cut design.



## Points of Clarification

**Pedestrian improvements are included in the current design for the four intersections located in Roanoke County and the City of Roanoke.**

**These improvements are in accordance with these localities long-term vision for pedestrian accommodations.**



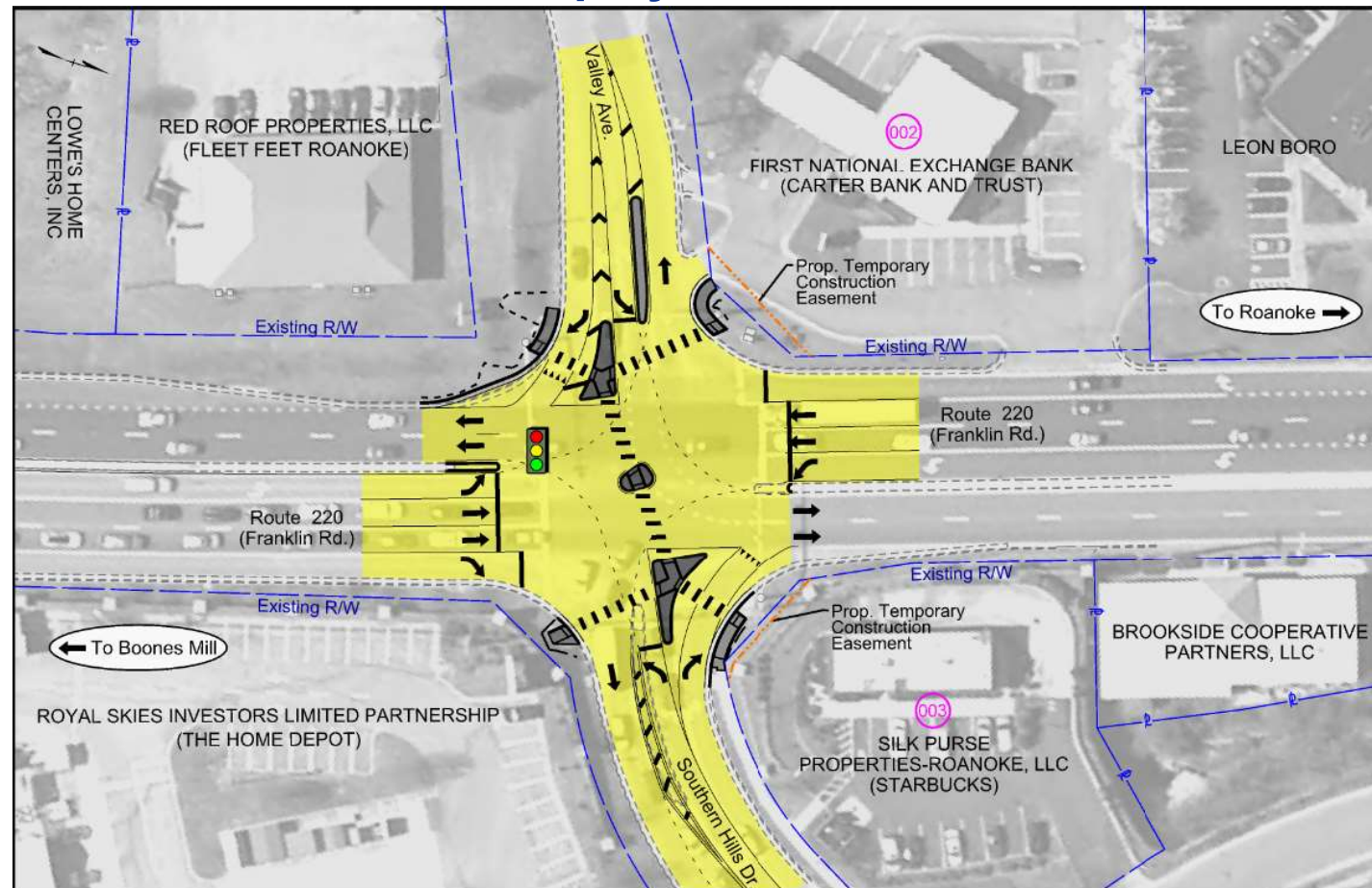
# Southern Hills Drive/Valley Avenue Intersection

## Roanoke County/City of Roanoke

### Display Board 01

#### Proposed Changes

- Redirecting side street through traffic to turn left or right at the signal and:
  - Turn directly into businesses or
  - Use a nearby crossover to make a U-turn
- Adding pedestrian signals and crosswalks





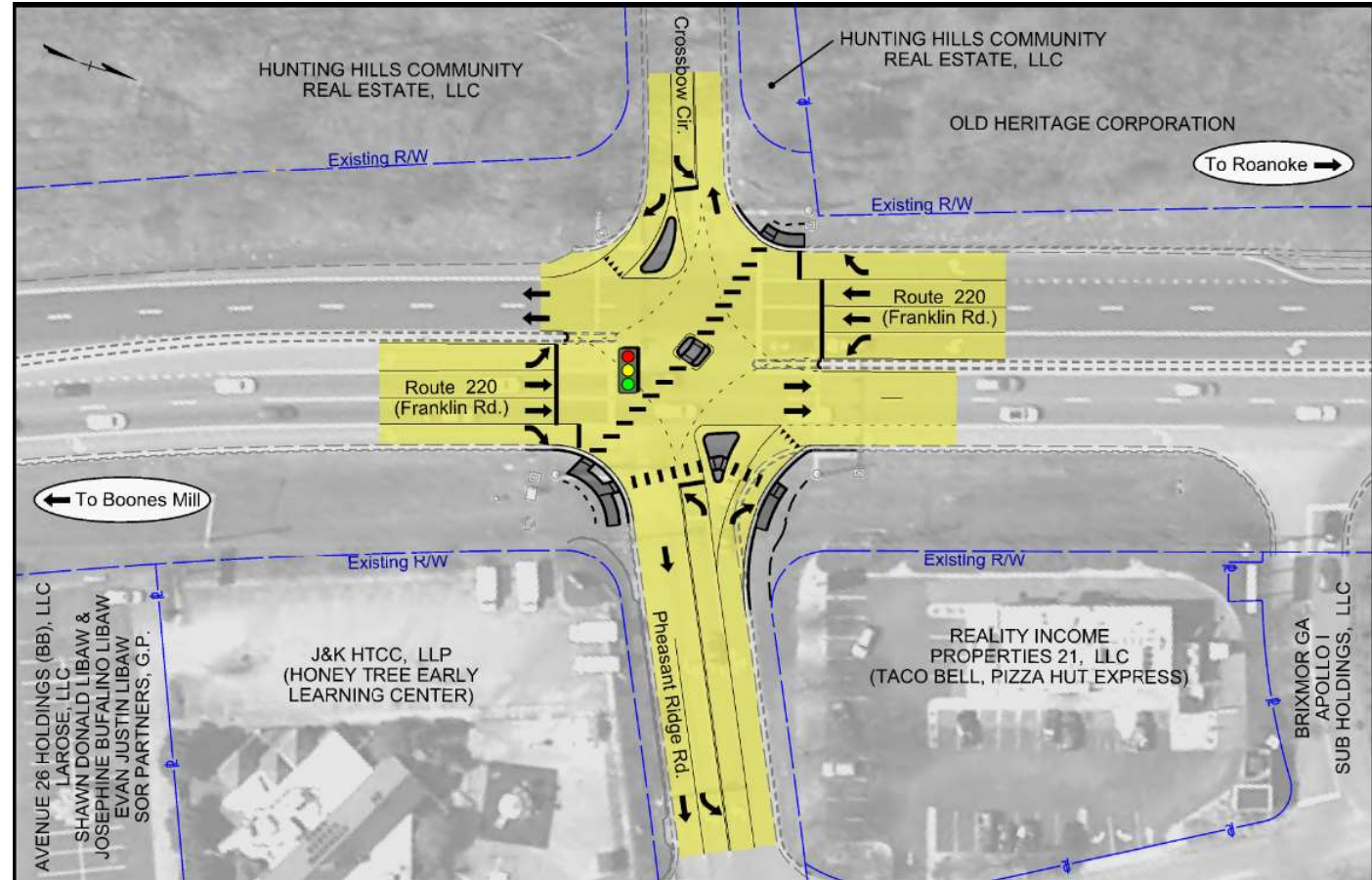
# Pheasant Ridge Road/Crossbow Circle Intersection

## Roanoke County/City of Roanoke

### Display Board 02

#### Proposed Changes

- Redirecting side street through traffic to turn left or right at the signal and:
  - Turn directly into businesses or
  - Use a nearby crossover to make a U-turn
- Adding pedestrian signals and crosswalks



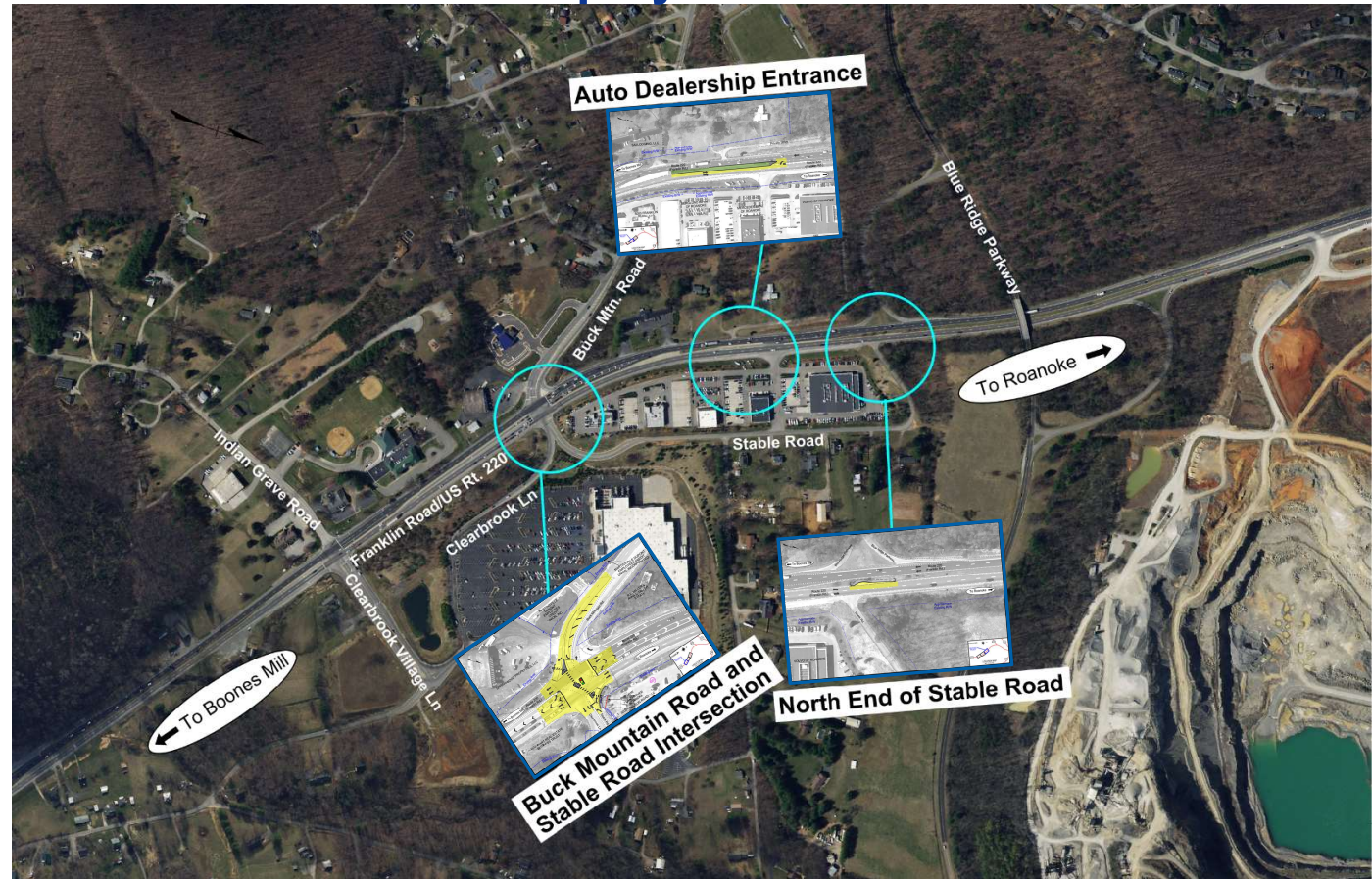
# Buck Mountain Road/Stable Road Overview

## Roanoke County

### Display Board 03

#### Proposed Changes

- Thru-cut at Buck Mountain Road
- Modified crossover at car dealership
- Wider area for truck turns at northern end of Stable Road





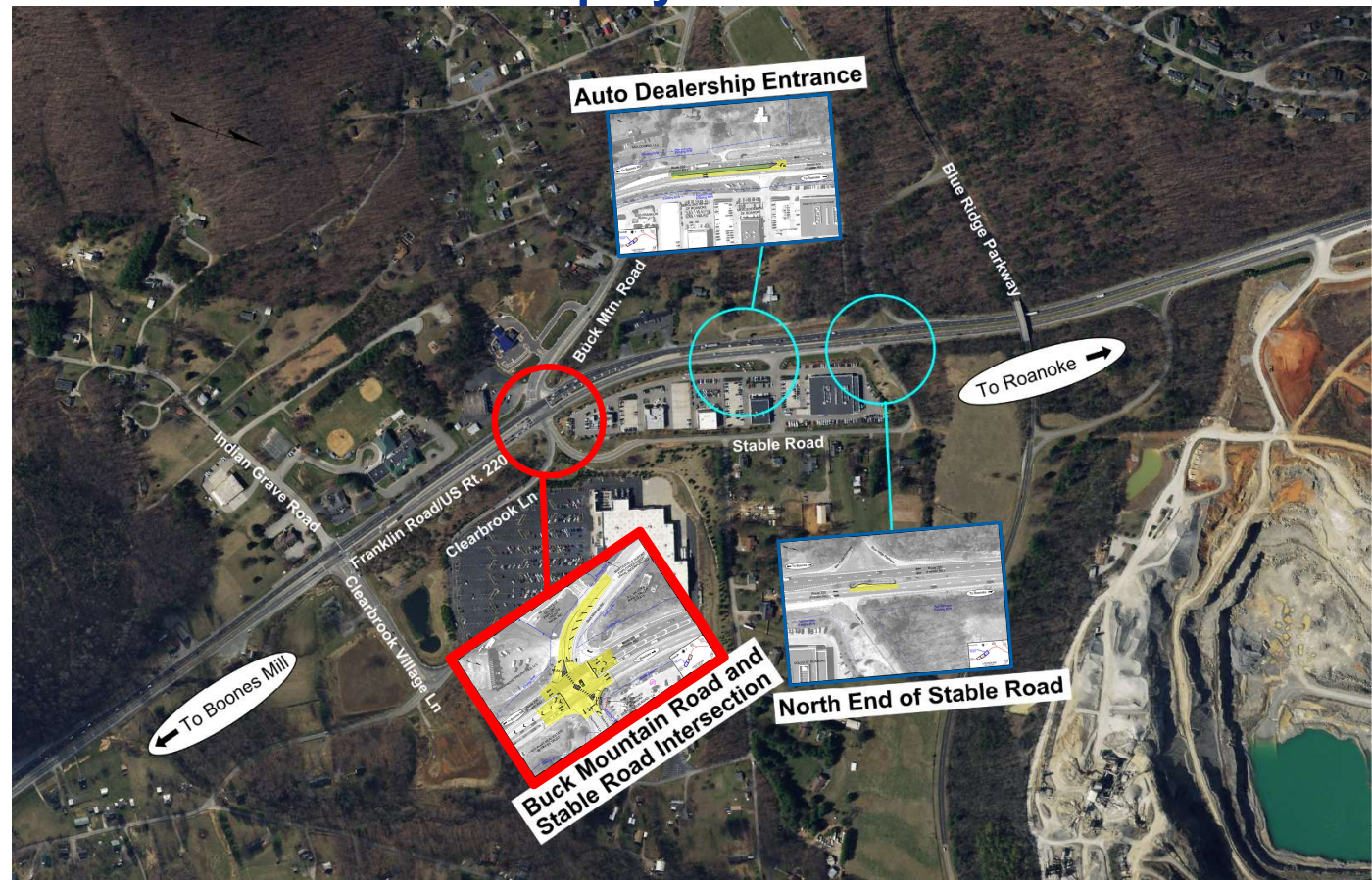
# Buck Mountain Road/Stable Road Overview

## Roanoke County

### Display Board 03

#### Proposed Changes

- **Thru-cut at Buck Mountain Road/Stable Road**
- Modified crossover at car dealership
- Wider area for truck turns at northern end of Stable Road





# Buck Mountain Road and Stable Road Intersection

## Roanoke County

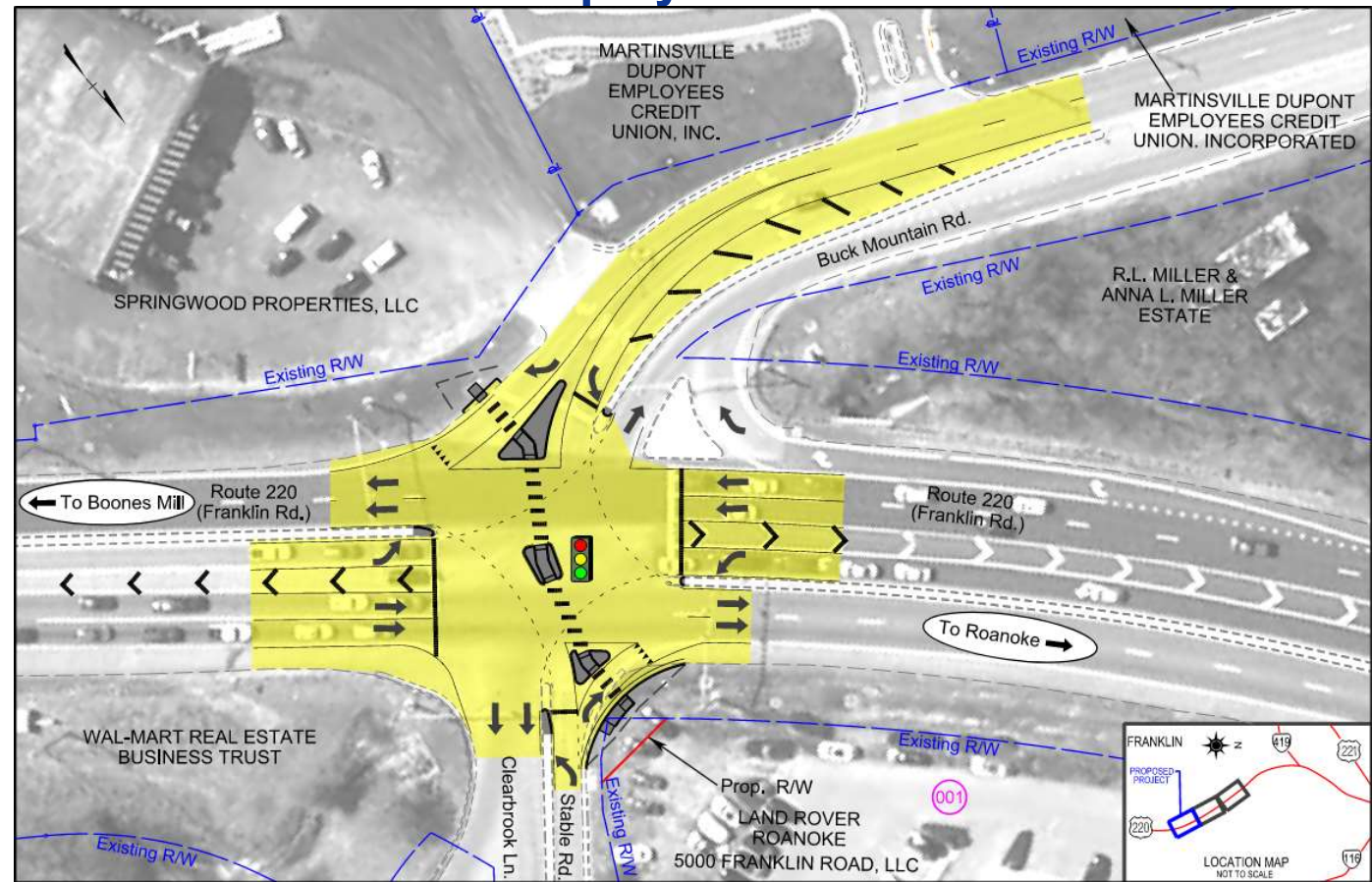
### Display Board 03A

#### Proposed Changes

- Redirecting side street through traffic to turn left or right at the signal and:
  - Turn directly into businesses or
  - Use a nearby crossover to make a U-turn
- Adding pedestrian signals and crosswalks

#### Public Input Modifications

- Providing right turns out of Stable Road.



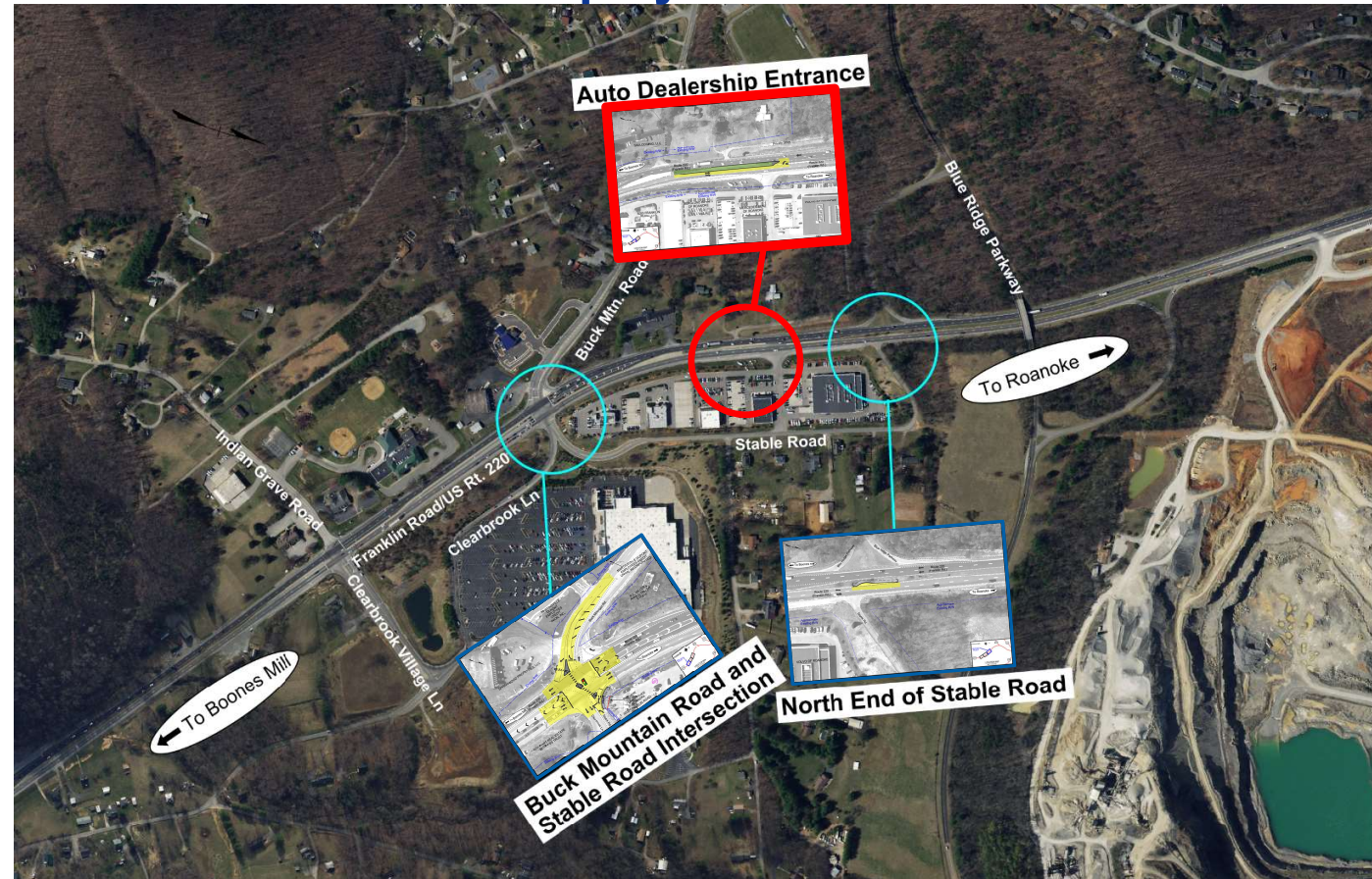
# Buck Mountain Road/Stable Road Overview

## Roanoke County

## Display Board 03

### Proposed Changes

- Thru-cut at Buck Mountain Road/Stable Road
- **Modified crossover at car dealership**
- Wider area for truck turns at northern end of Stable Road





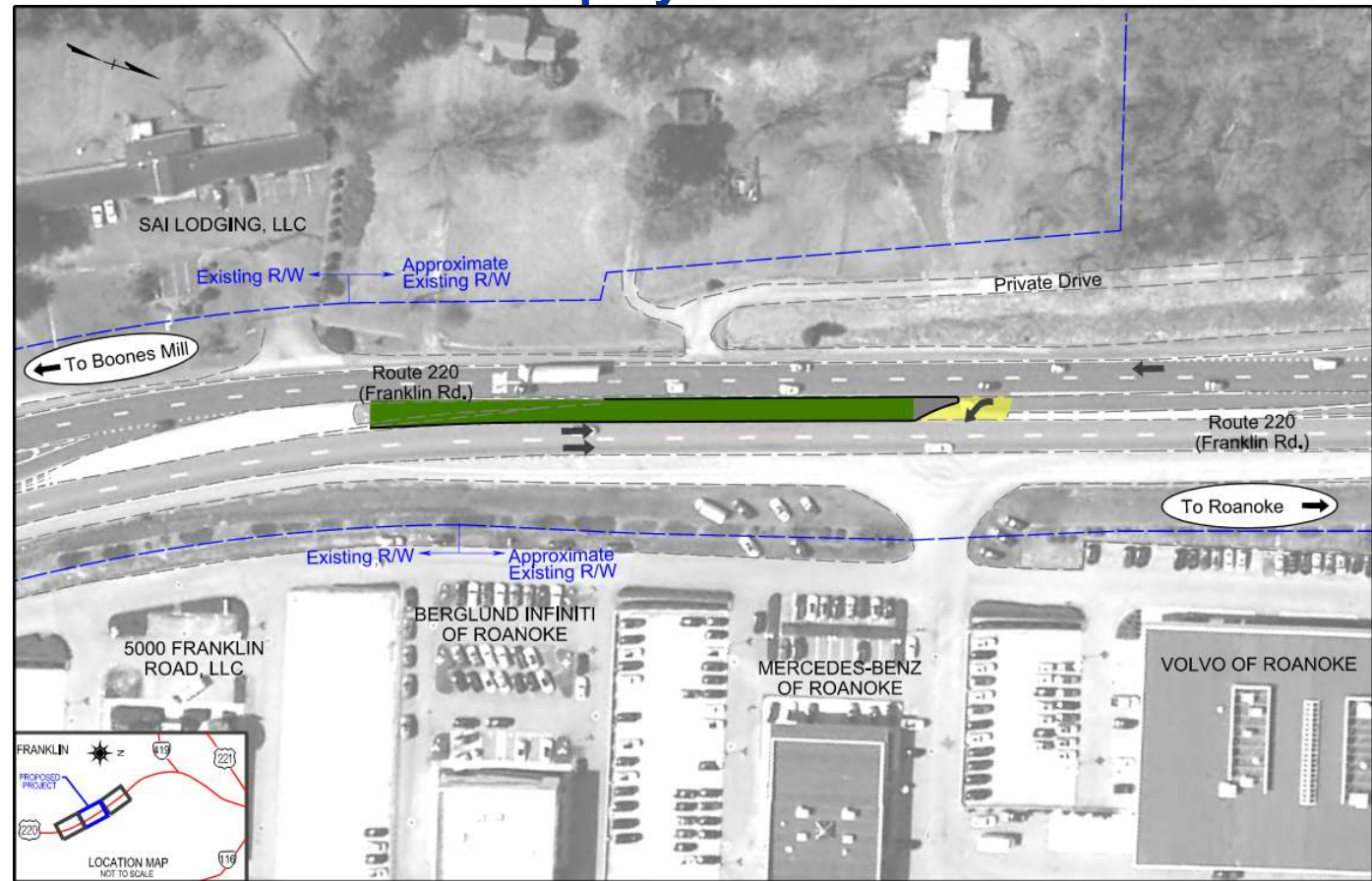
# Auto Dealership Entrance

## Roanoke County

### Display Board 03B

#### Proposed Changes

- Reconfiguring existing crossover into a dedicated left turn into the auto dealership.



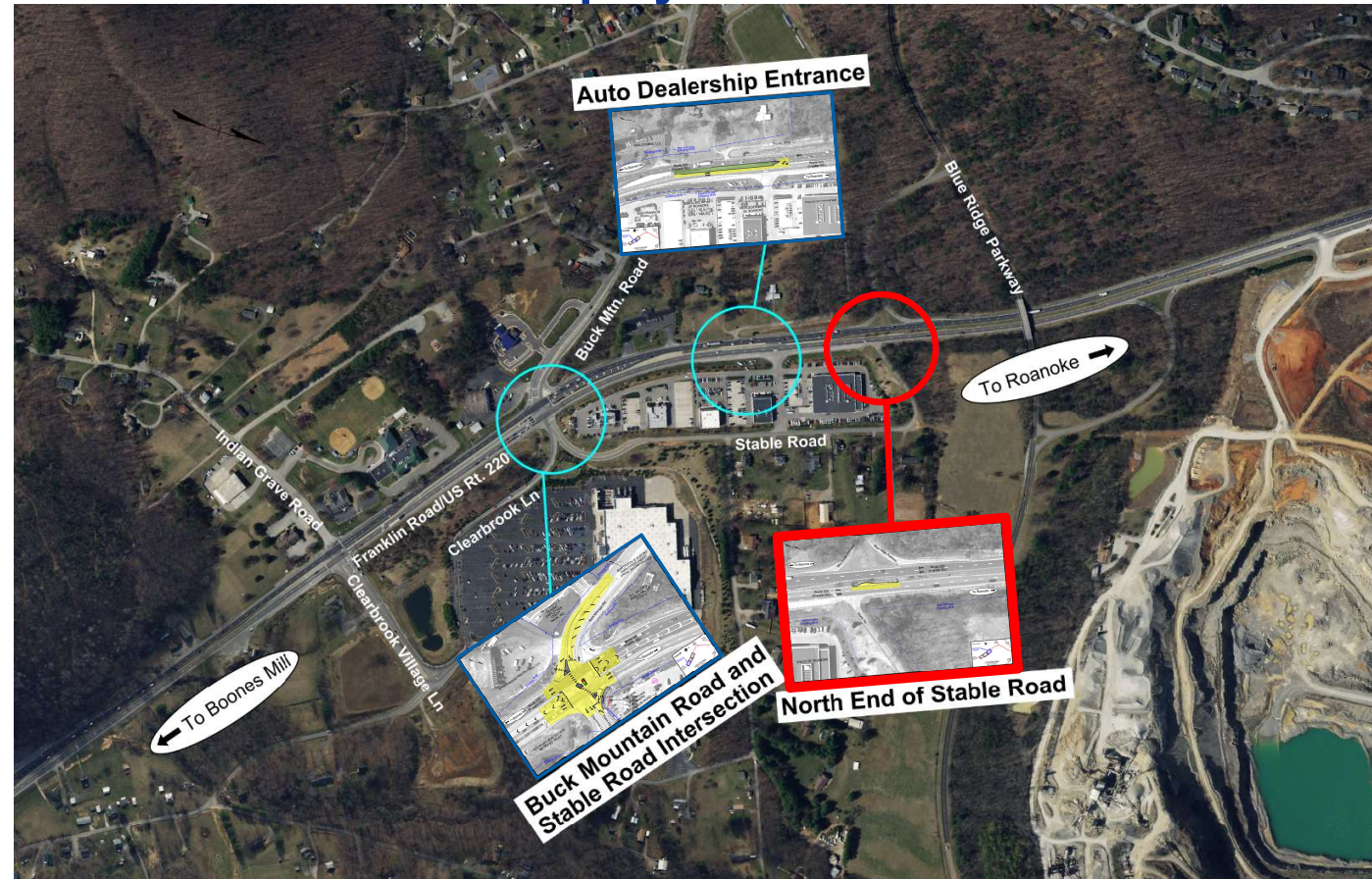
# Buck Mountain Road/Stable Road Overview

## Roanoke County

## Display Board 03

### Proposed Changes

- Thru-cut at Buck Mountain Road/Stable Road
- Modified crossover at car dealership
- **Wider area for truck turns at northern end of Stable Road**





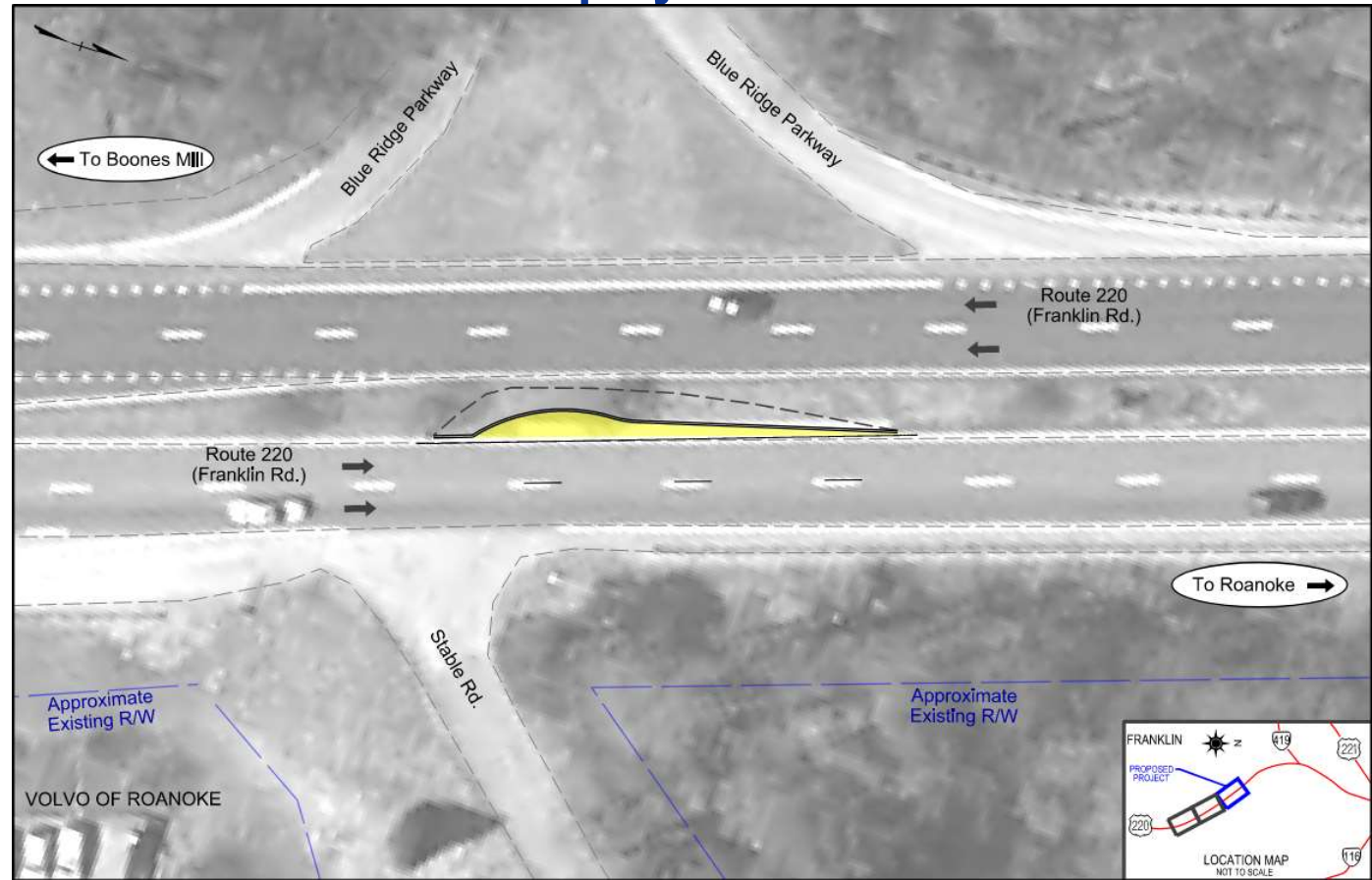
# North End of Stable Road

## Roanoke County

### Display Board 03C

#### Public Input Modifications

- Providing additional space for larger vehicles to turn right out of the northern end of Stable Road.



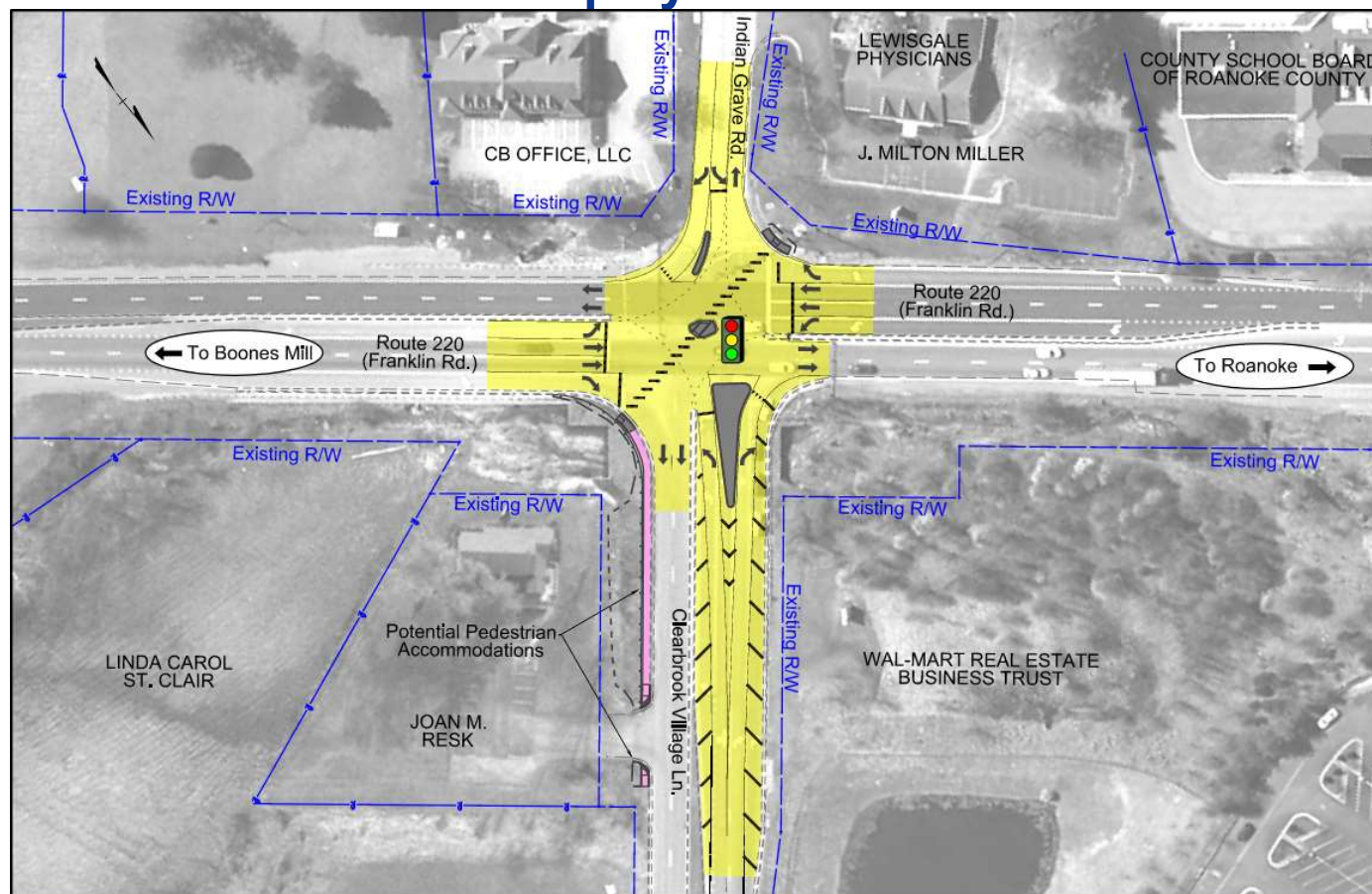
# Clearbrook Village Lane and Indian Grave Road Intersection

## Roanoke County

### Display Board 04

#### Proposed Changes

- Redirecting side street through traffic to turn left or right at the signal and:
  - Turn directly into businesses or
  - Use a nearby crossover to make a U-turn
- Adding pedestrian signals and crosswalks



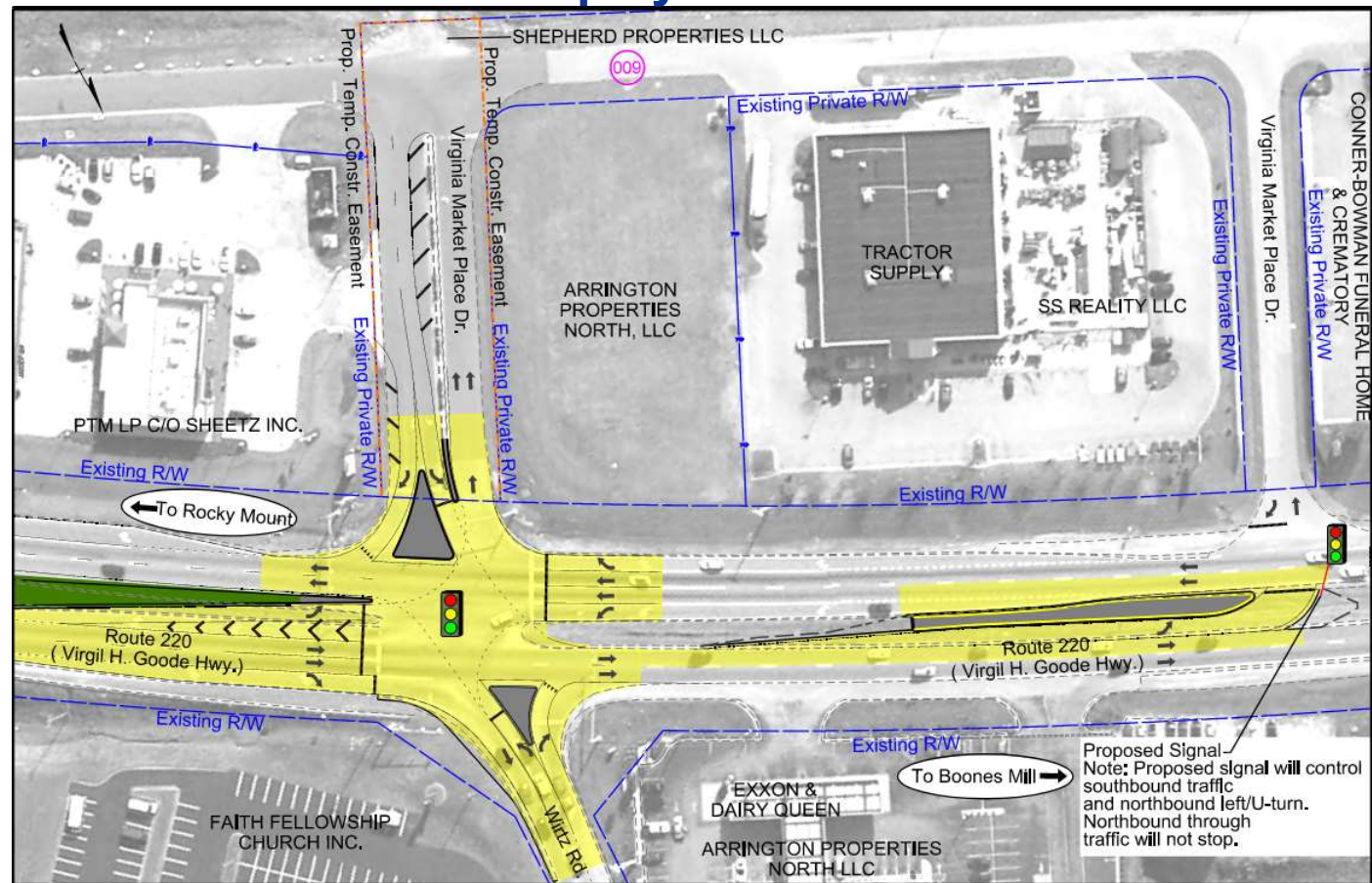


# Wirtz Road and Virginia Market Place Drive Intersection Franklin County

## Display Board 05

### Proposed Changes

- Redirecting side street through traffic to turn left or right at the signal and:
  - Turn directly into businesses or
  - Use a nearby crossover to make a U-turn
- Adding a new northbound turn lane and a signalized crossover for U-turns





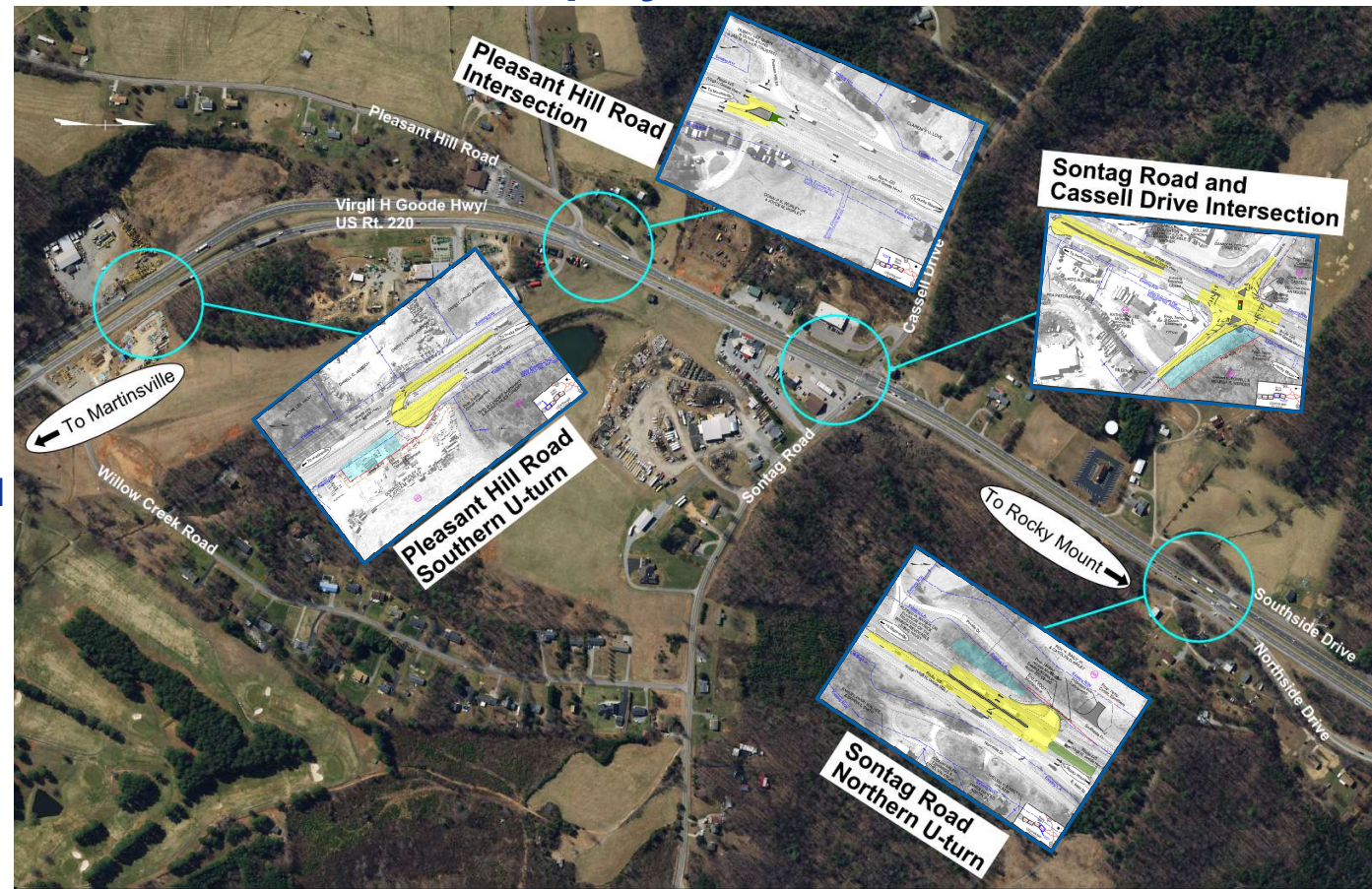
# Sontag Road and Cassell Drive Overview

## Franklin County

## Display Board 06

### Proposed Changes

- Thru-cut at Sontag Road and Cassell Drive
- New left turn lane with paved area for U-turns south of Sontag Road
- New left turn lane with paved area for U-turns north of Sontag Road
- Modified crossover at Pleasant Hill Road
- New left turn lane with paved area for U-turns south of Pleasant Hill Road





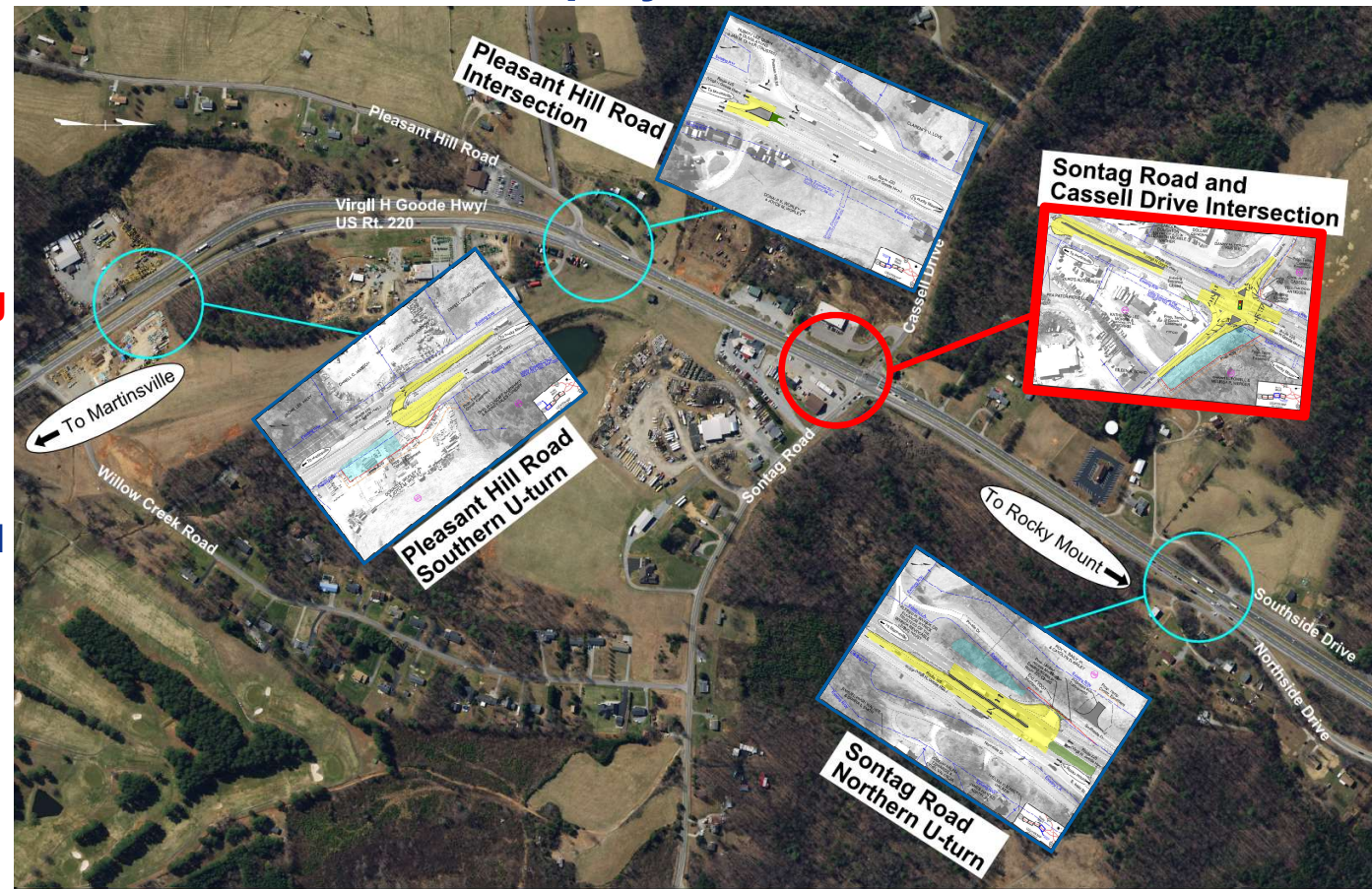
# Sontag Road and Cassell Drive Overview

Franklin County

Display Board 06

## Proposed Changes

- **Thru-cut at Sontag Road and Cassell Drive**
- **New left turn lane with paved area for U-turns south of Sontag Road**
- New left turn lane with paved area for U-turns north of Sontag Road
- Modified crossover at Pleasant Hill Road
- New left turn lane with paved area for U-turns south of Pleasant Hill Road





# Sontag Road and Cassell Drive Intersection

## Franklin County

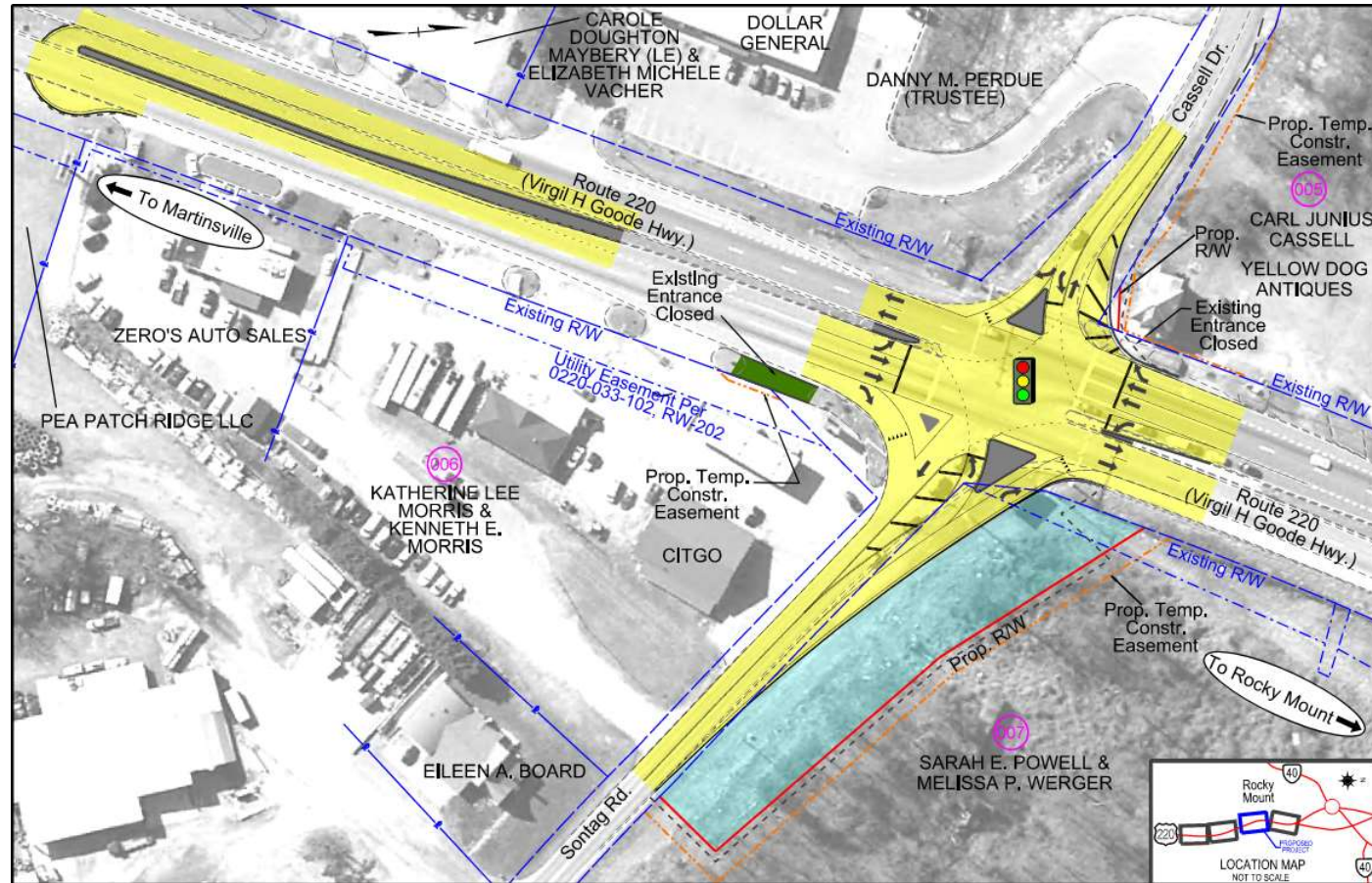
### Display Board 06A

#### Proposed Changes

- Redirecting side street through traffic to turn left or right at the signal and:
  - Turn directly into businesses or
  - Use a nearby crossover to make a U-turn
- Adding new right turn lane from Sontag Road onto northbound Route 220

#### Public Input Modifications

- Providing dedicated left turn lane for southbound U-turns at location closer to the Sontag Road and Cassell Drive intersection





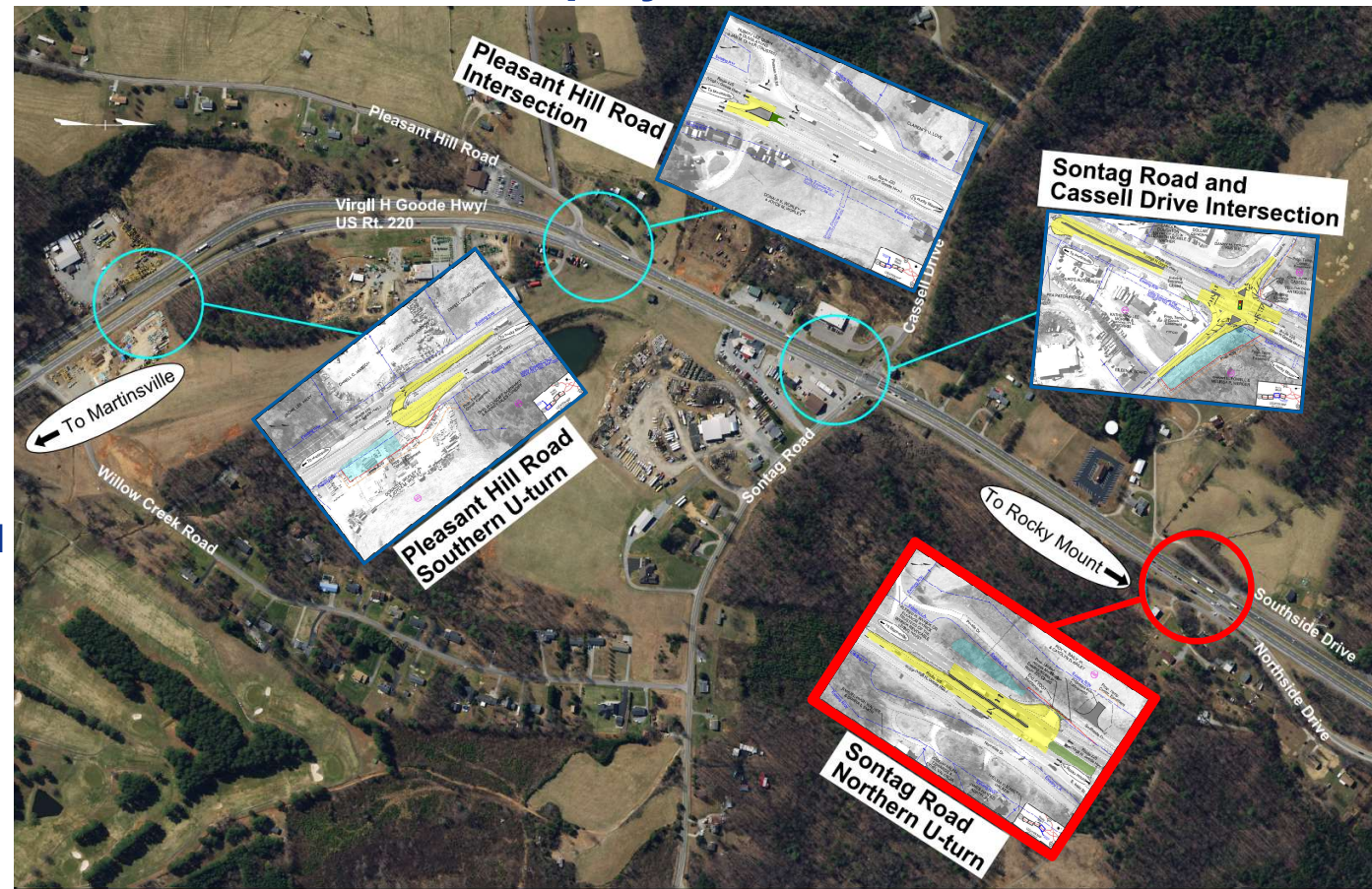
# Sontag Road and Cassell Drive Overview

Franklin County

Display Board 06

## Proposed Changes

- Thru-cut at Sontag Road and Cassell Drive
- New left turn lane with paved area for U-turns south of Sontag Road
- **New left turn lane with paved area for U-turns north of Sontag Road**
- Modified crossover at Pleasant Hill Road
- New left turn lane with paved area for U-turns south of Pleasant Hill Road





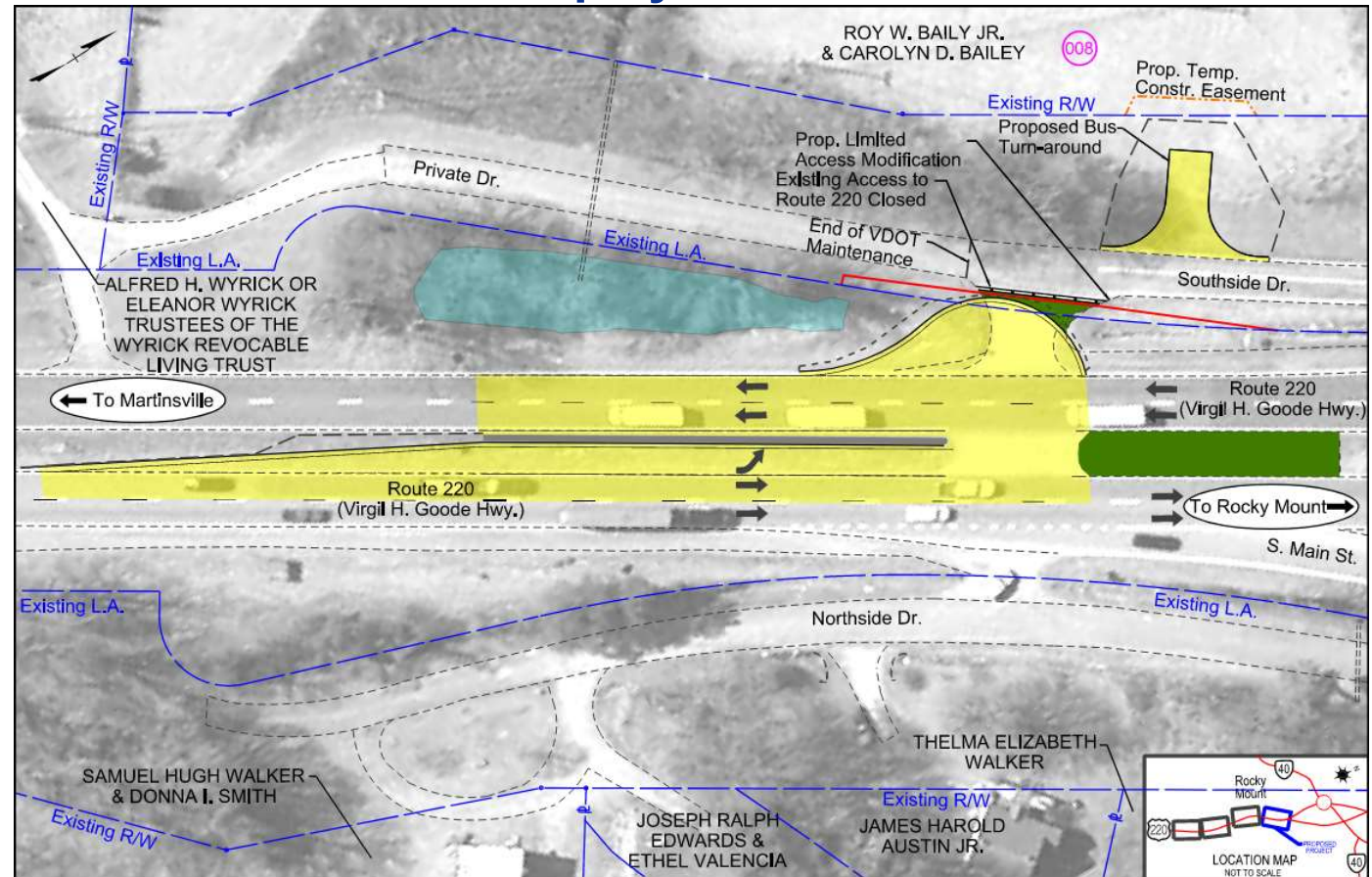
# Sontag Road Northern U-turn

## Franklin County

### Display Board 06B

#### Proposed Changes

- Adding new northbound turn lane with paved area for U-turns at existing Southside Drive crossover
- Closing Southside Drive access to Route 220 at existing crossover





# Sontag Road and Cassell Drive Overview

## Franklin County

## Display Board 06

### Proposed Changes

- Thru-cut at Sontag Road and Cassell Drive
- New left turn lane with paved area for U-turns south of Sontag Road
- New left turn lane with paved area for U-turns north of Sontag Road
- **Modified crossover at Pleasant Hill Road**
- New left turn lane with paved area for U-turns south of Pleasant Hill Road





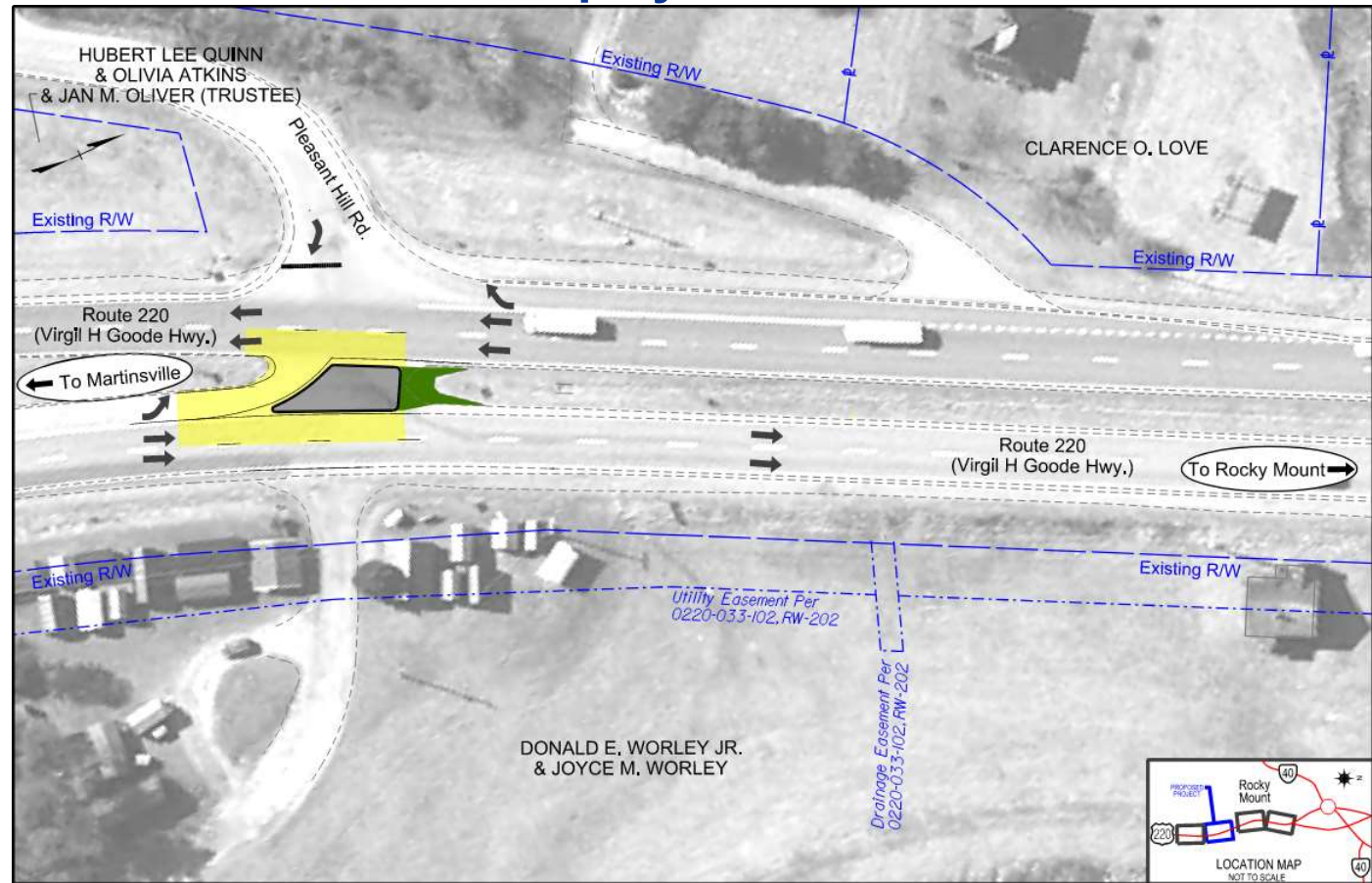
# Pleasant Hill Road Intersection

## Franklin County

## Display Board 06C

### Proposed Changes

- Redirecting left turns from Pleasant Hill Road to turn right and use a new left turn lane with paved area for U-turns south of Pleasant Hill Road



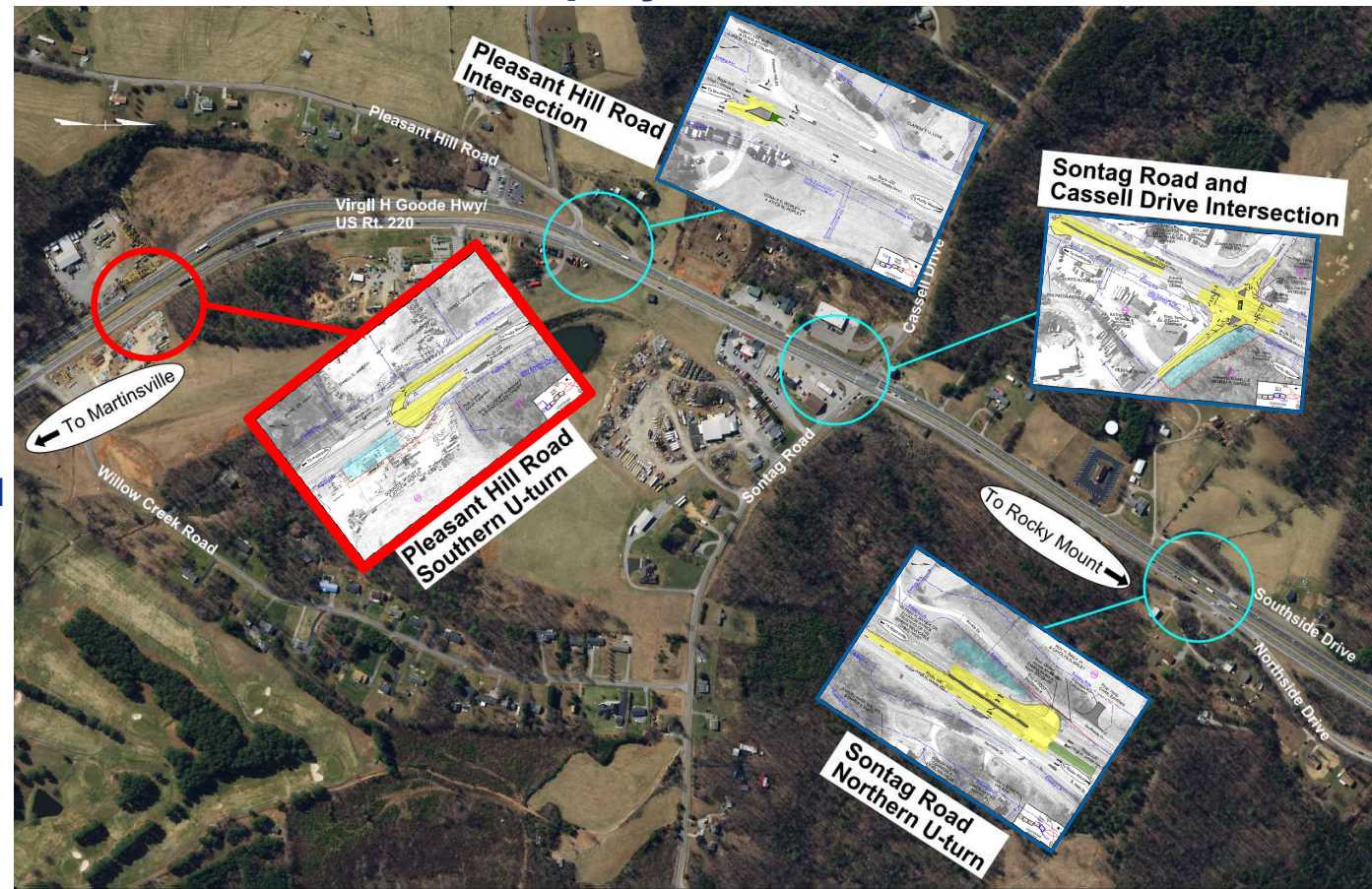
# Sontag Road and Cassell Drive Overview

## Franklin County

## Display Board 06

### Proposed Changes

- Thru-cut at Sontag Road/Cassell Drive
- New left turn lane with paved area for U-turns south of Sontag Road
- New left turn lane with paved area for U-turns north of Sontag Road
- Modified crossover at Pleasant Hill Road
- **New left turn lane with paved area for U-turns south of Pleasant Hill Road**





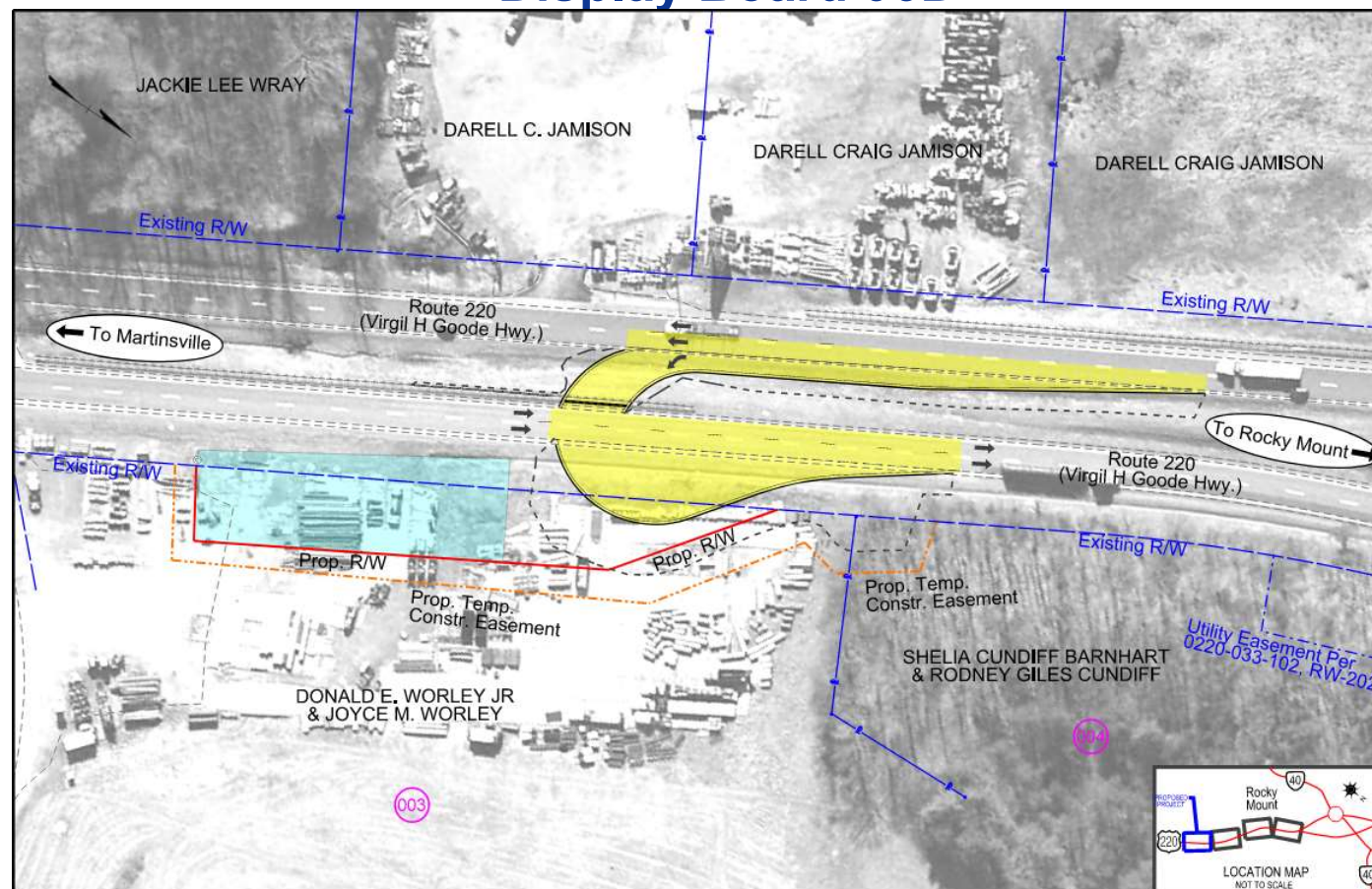
# Pleasant Hill Road Southern U-turn

## Franklin County

## Display Board 06D

### Proposed Changes

- Adding new left turn lane with paved area for U-turns south of Pleasant Hill Road



# Dyer Street Intersection

## Henry County

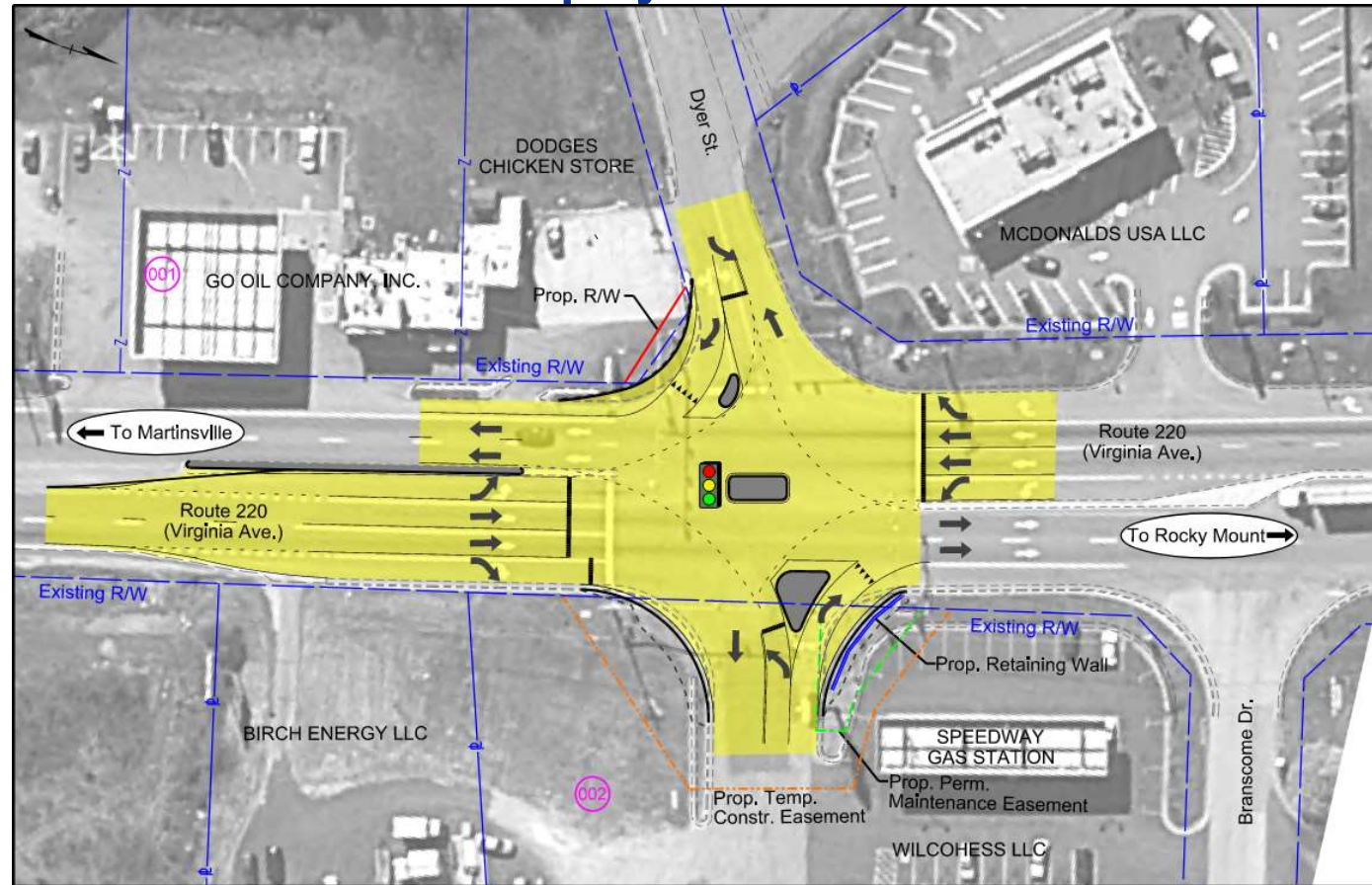
### Display Board 07

#### Proposed Changes

- Redirecting side street through traffic to turn left or right at the signal and:
  - Turn directly into businesses or
  - Use a nearby crossover to make a U-turn

#### Public Input Modifications

- Providing right turn out of the gas station



# Project Traffic Impacts

---

**Traffic in each direction on Route 220 will be maintained throughout the duration of the project with the following anticipated impacts:**

- **Temporary lane closures scheduled outside of peak traffic times**
- **Potential for narrowed travel lanes**
- **Lane shifts**
- **Shoulder closures**
- **Temporary redirection of turning movements**

# National Environmental Policy Act (NEPA) of 1969

Project will not individually or cumulatively have significant environmental impacts to require an Environmental Assessment or Environmental Impact Statement.

Project qualifies for a Programmatic Categorical Exclusion (CE) level of NEPA documentation under 23 CFR 771.117.

**A Programmatic Categorical Exclusion was prepared and approved by the Federal Highway Administration on September 10, 2020 and is available on the project website.**





## Proposed Right of Way (ROW)

---

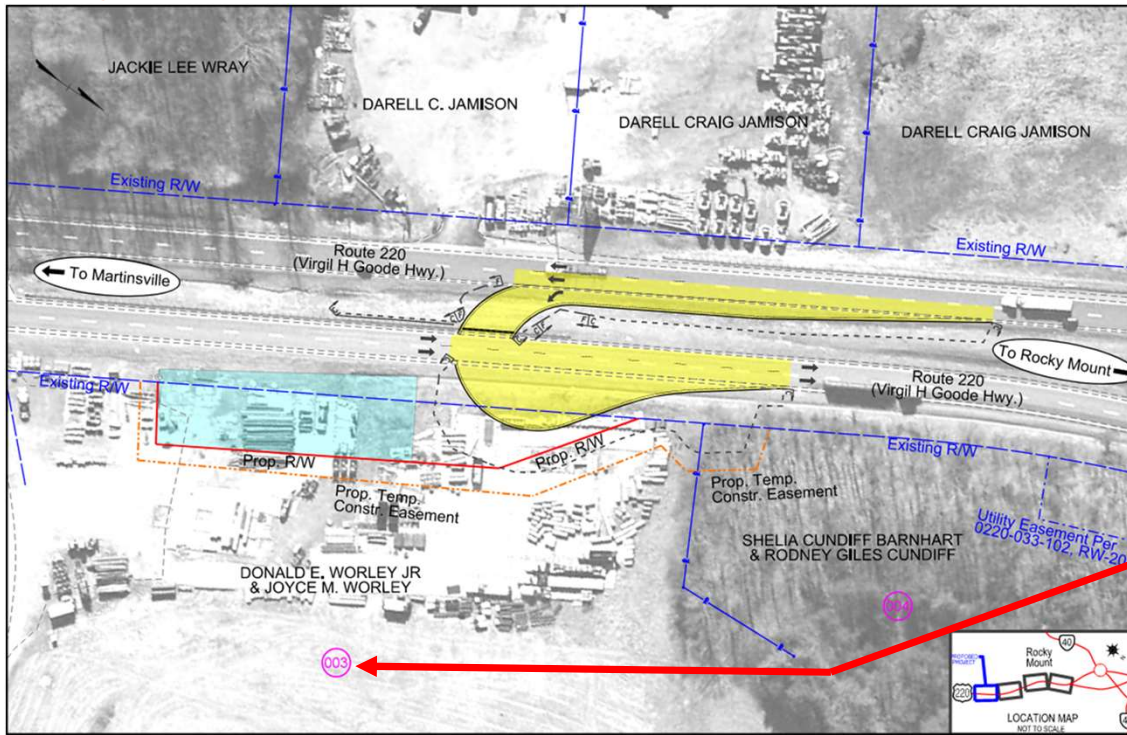
- No businesses, residents or non-profit organizations will be displaced.
- Approximately 3.5 acres of additional right of way will be required, including permanent and temporary easements for construction, stormwater facilities and utilities.
- Display boards showing potential impacts are available on the project website <http://www.virginiadot.org/route220Intersections/>

# Preliminary Right of Way Data Sheet

Parcel Number	PH Display Board	Landowner Name	Sheet Number	Deed Acreage	Remainder	Fee Take Summary			Permanent Easements				Utility Easements		Temporary		
						Total	Prescriptive	Non-Prescr.	(Dr)ainage	(S)lope			Electric	VDOT	Construction		
001	07	Go Oil Company, Inc.	3			277 SF		277 SF									
002	07	Wilcohes LLC	3	3.306 AC	3.306 AC										1463 SF	9625 SF	
003	06D	Donald E. Worley Jr. & Joyce M. Worley	4	67.108 AC	66.687 AC	18353 SF		18353 SF								30092 SF	
004	06D	Sheila Cundiff Barnhart & Rodney Giles Cundiff	4	11.93 AC	11.93 AC											2044 SF	
005	06A	Carl Junius Cassell	7	3 AC	2.995 AC	230 SF		230 SF								2127 SF	
006	06A	Katherine Lee Morris & Kenneth E. Morris	7, 7D	2.25 AC	2.25 AC											177 SF	
007	06A	Sarah H. Powell & Melissa P. Weger	7, 7D	17.47 AC	16.872 AC	26045 SF		26045 SF								33127 SF	
008	06B	Roy W. Bailey Jr. & Carolyn D. Bailey	8	20.09 AC	20.09 AC											407 SF	
009	05	Shepherd Properties LLC	9D	50.29 AC	50.29 AC											28724 SF	
010																	

# Preliminary Right of Way Data Sheet

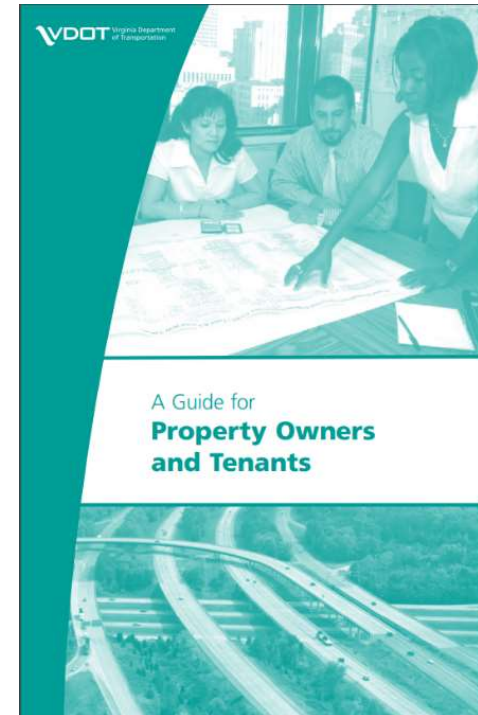
## Display Board 6D Pleasant Hill Road Southern U-turn



Parcel Number	PH Display Board	Landowner Name	Sheet
			Number
001	07	Go Oil Company, Inc.	3
002	07	Wilcohes LLC	3
003	06D	Donald E. Worley Jr. & Joyce M. Worley	4
004	06D	Sheila Cundiff Barnhart & Rodney Giles Cundiff	4
005	06A	Carl Junius Cassell	7
006	06A	Katherine Lee Morris & Kenneth E. Morris	7, 7D
007	06A	Sarah H. Powell & Melissa P. Werger	7, 7D
008	06B	Roy W. Bailey Jr. & Carolyn D. Bailey	8
009	05	Shepherd Properties LLC	9D

# Right of Way (ROW) Acquisition Information

- The property owners will be informed of the property impacts and easements during the right of way acquisition process prior to construction.
- All ROW acquisitions will be completed in accordance with the Uniform Relocation Assistance and Real Property Acquisition Policies Act of 1970, as amended in 1987.
- Information about right of way acquisition is discussed in VDOT's brochure entitled, "Right of Way and Utilities: a Guide for Property Owners and Tenants." The brochure is available on VDOT's website.



# How to submit your comments for the Public Hearing Record

Please submit your comments regarding the design presented in this Virtual Design Public Hearing by using the methods below by our deadline of May 1, 2021.



## Email

[Route220intersections@VDOT.Virginia.gov](mailto:Route220intersections@VDOT.Virginia.gov)



## Mail

Virginia Department of Transportation  
ATTN: Brett Elledge  
731 Harrison Ave  
Salem, VA 24153



## Online Form

<https://www.virginiadot.org/route220Intersections/>



# Questions

---

Due to the virtual format of tonight's public hearing, we will now take your questions through the WebEx Chat and answer as many as time allows.

As a reminder, questions submitted through the Chat feature will not be included in the Public Hearing Record.

In order for your comment to be part of the public hearing record, please submit it using one of the three methods listed on the previous slide.

## **Tips for using WebEx to submit questions:**

- 1. Click both "Participants" and "Chat" in the lower right-hand corner.**
- 2. To ask a question, write your question in the space marked "Enter chat message here." Make sure the message is addressed "to" Everyone.**
- 3. If you get disconnected, please attempt to rejoin the meeting.**

# Quick Contacts

---

## Project Specific Website

<http://www.virginiadot.org/Route220Intersections>

Click on the blue button to go to the public hearing page and documents.

## VDOT Project Manager

Brett Elledge

540-387-5353

Email: [Route220Intersections@VDOT.Virginia.gov](mailto:Route220Intersections@VDOT.Virginia.gov)

**Thank you for Your Participation!**



**Virtual Design Public Hearing**